

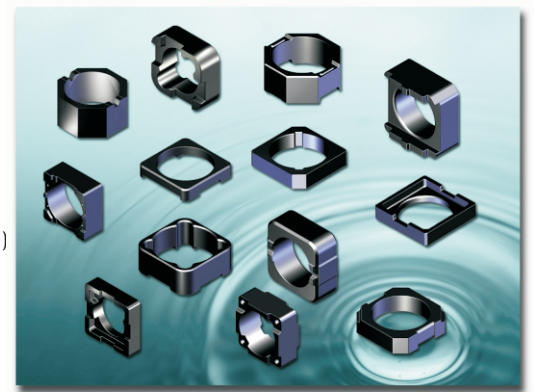
## SI TYPE

### (1) ORDERING CODE 產品名稱

F4D	SI	12.3	x	10.85	x	6.8
Material	Type	Outside Diameter(AΦ)		Inside Diameter(CΦ)		Thickness(D)
材質	形狀	外徑(AΦ)		內徑(CΦ)		高度(D)

Combined with DRUM CORE(配套DR CORE)

F4D DR 10x7 B6.5 F5.0



### (2) SUITABLE MATERIAL (適用材質)

F4D, F4F, F5D, F6D .....

### (3) SHAPE (圖形標示)

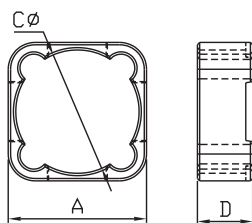


Fig 1

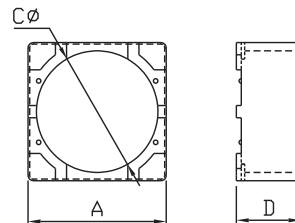


Fig 2

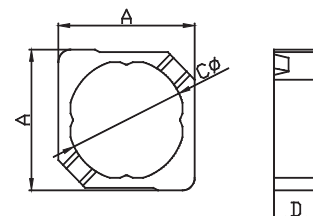


Fig 3

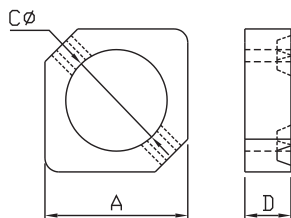


Fig 4

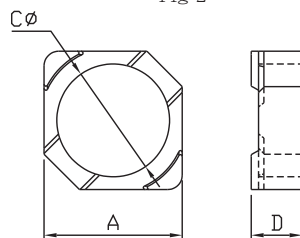


Fig 5

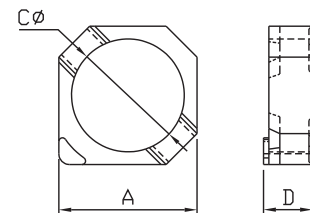


Fig 6

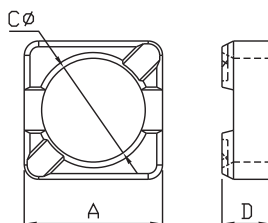


Fig 7

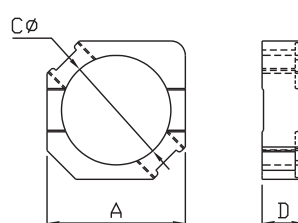


Fig 8

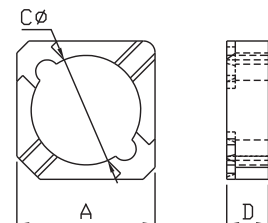


Fig 9

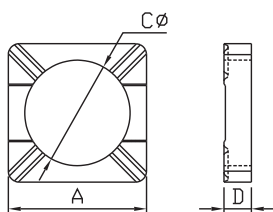


Fig 10

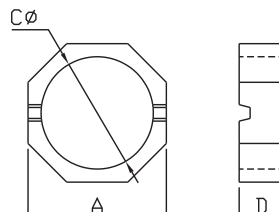


Fig 11

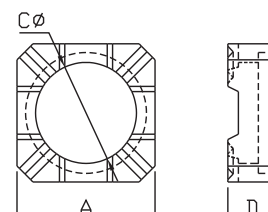


Fig 12

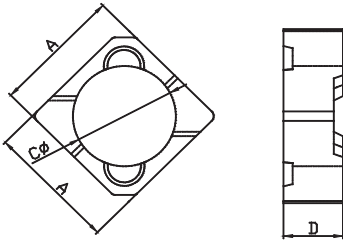


Fig 13

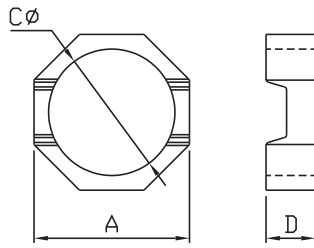


Fig 14

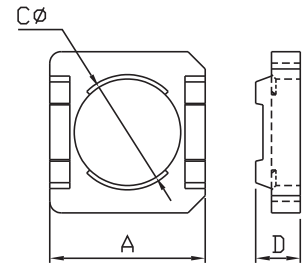


Fig 15

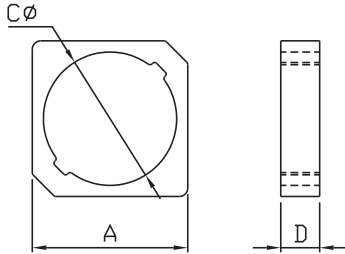


Fig 16

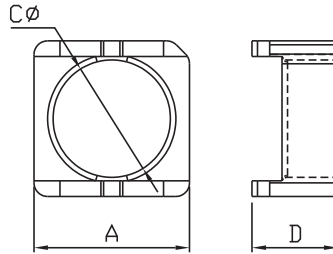


Fig 17

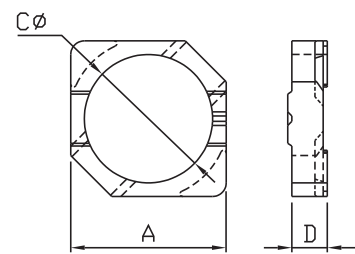


Fig 18

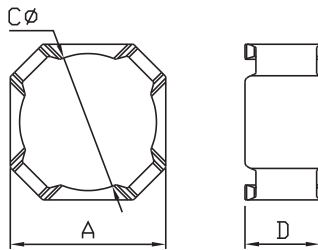


Fig 19

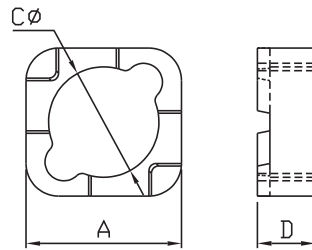


Fig 20

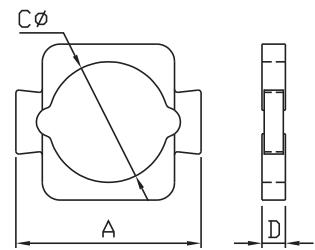


Fig 21

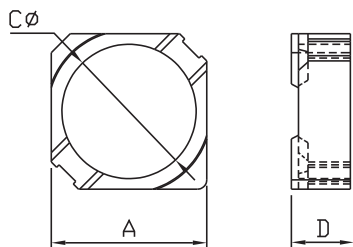


Fig 22

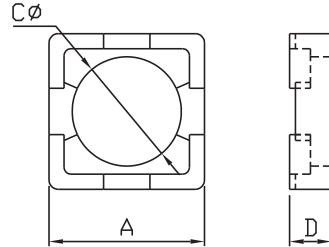


Fig 23

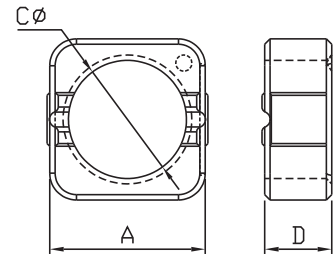


Fig 24

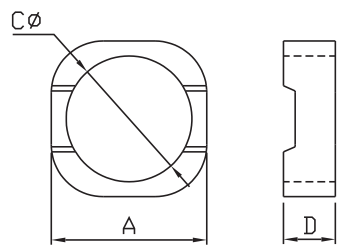


Fig 25

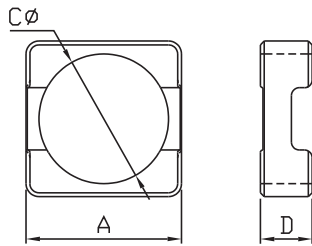


Fig 26

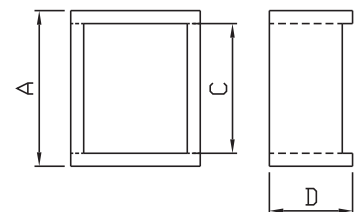


Fig 27

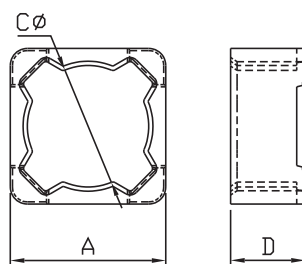


Fig 28

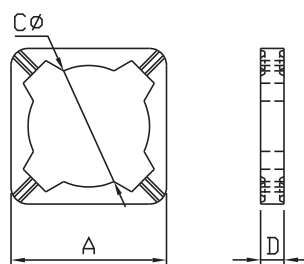


Fig 29

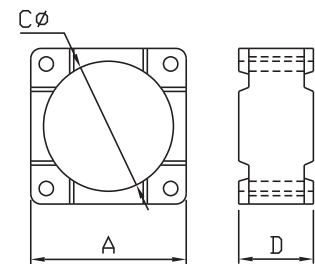


Fig 30

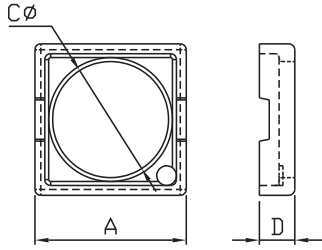


Fig 31

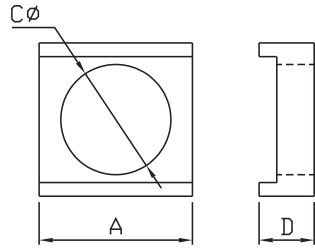


Fig 32

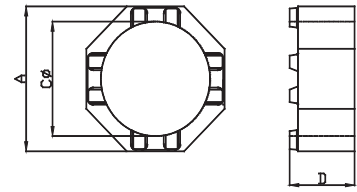


Fig 33

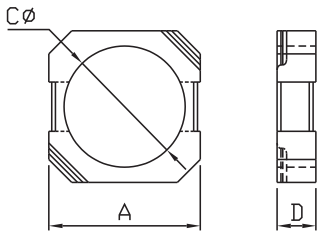


Fig 34

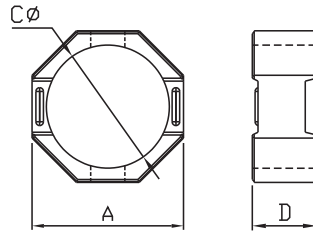


Fig 35

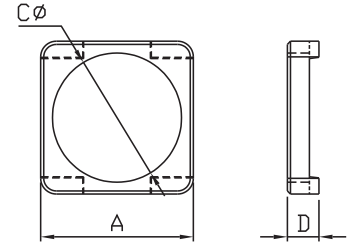


Fig 36

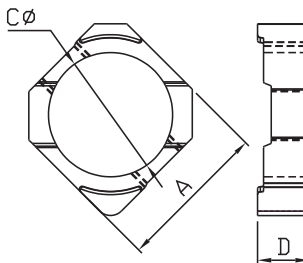


Fig 37

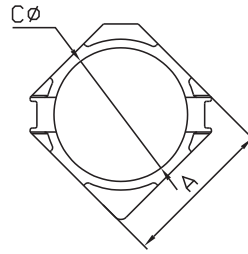


Fig 38

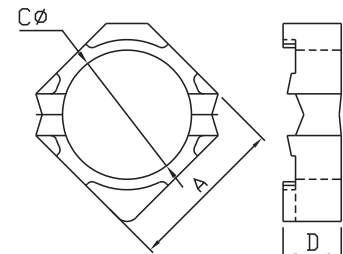


Fig 39

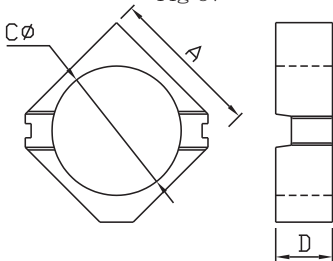


Fig 40

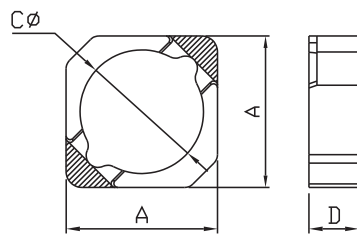


Fig 41

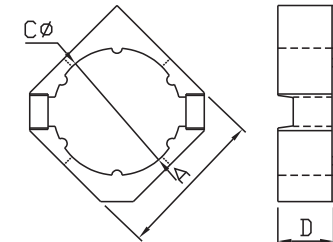


Fig 42

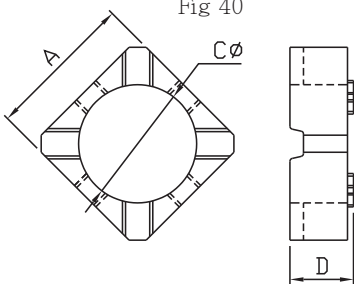


Fig 43

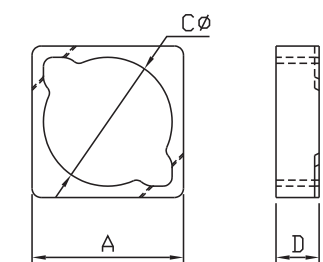


Fig 44

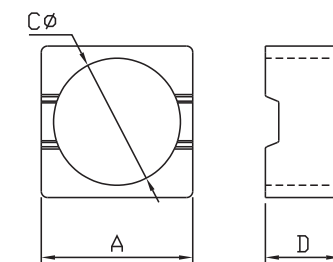


Fig 45

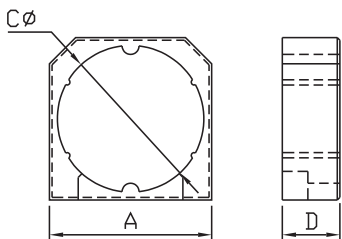


Fig 46

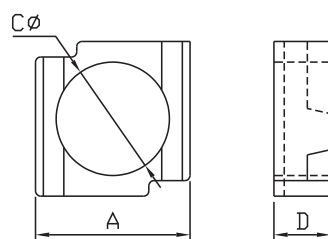


Fig 47

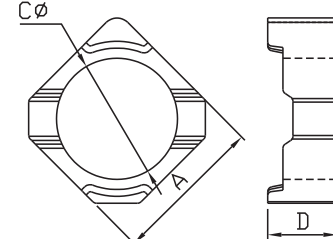


Fig 48

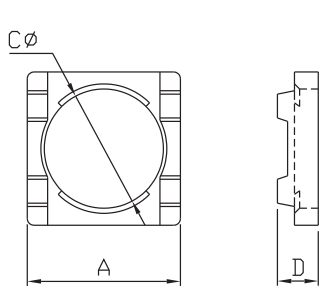


Fig 49

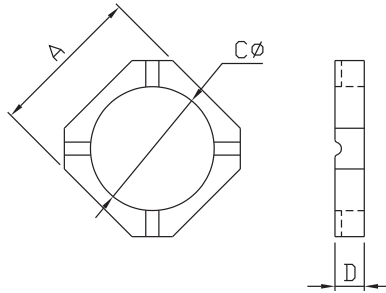


Fig 50

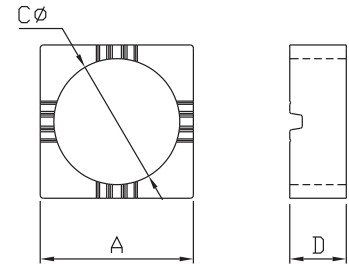


Fig 51

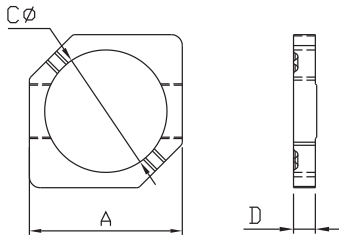


Fig 52

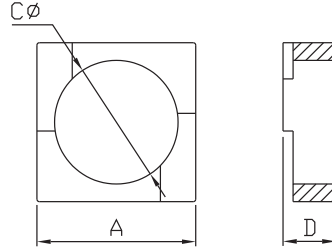


Fig 53

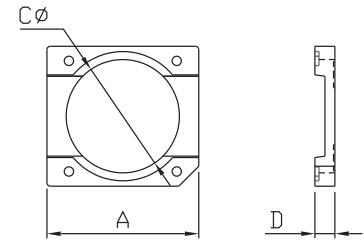


Fig 54

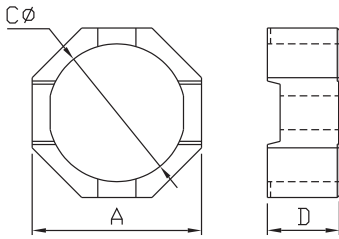


Fig 55

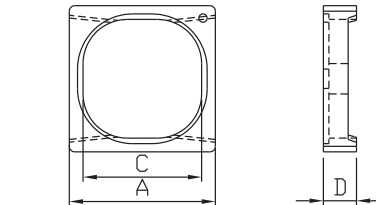


Fig 56

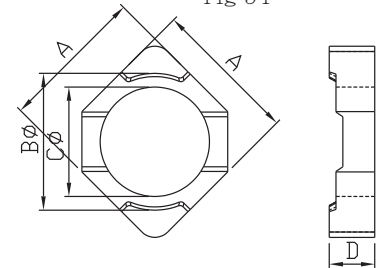


Fig 57

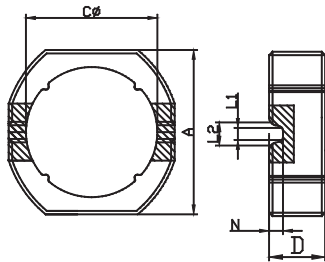


Fig 58

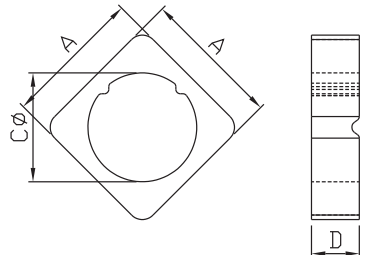


Fig 59

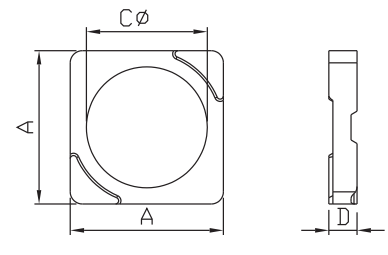


Fig 60

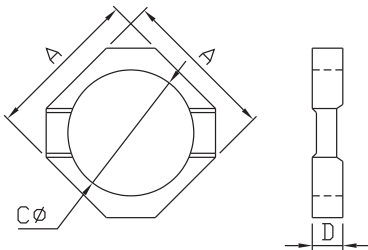


Fig 61

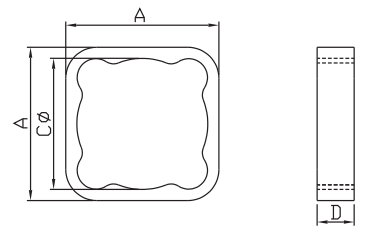


Fig 62

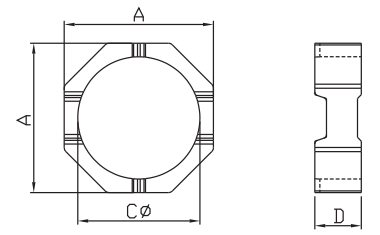


Fig 63

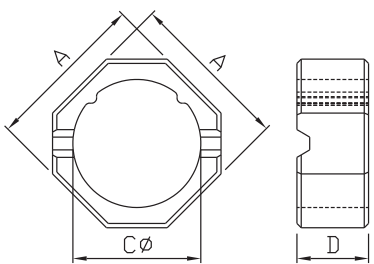


Fig 64

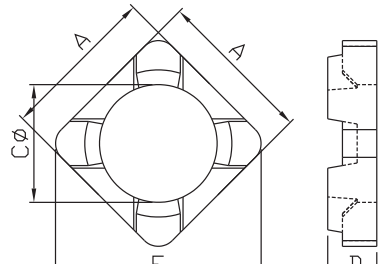


Fig 65

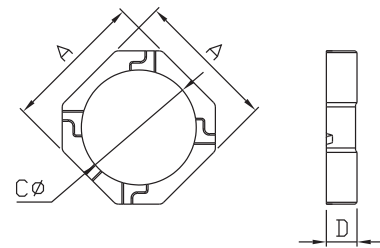


Fig 66

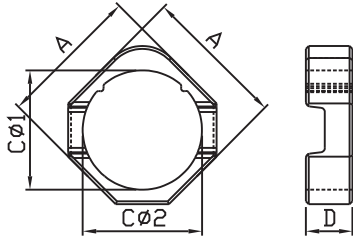


Fig 67

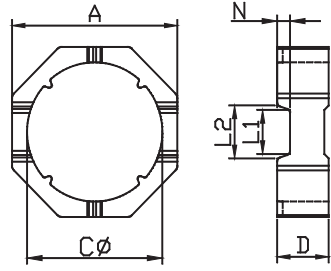


Fig 68

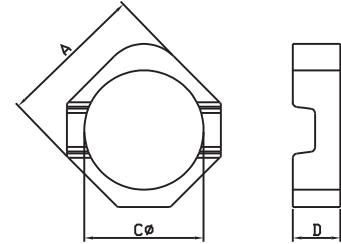


Fig 69

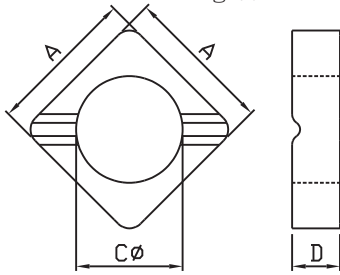


Fig 70

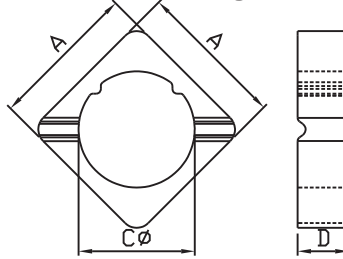


Fig 71

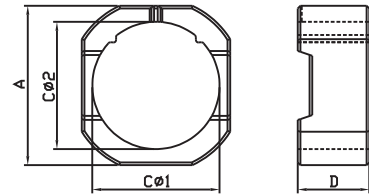


Fig 72

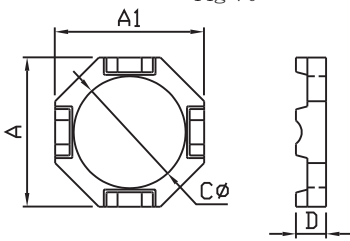


Fig 73

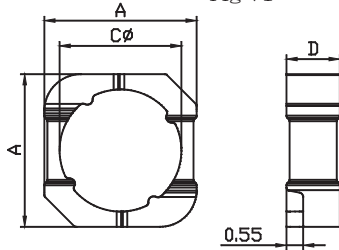


Fig 74

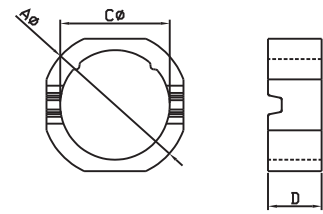


Fig 75

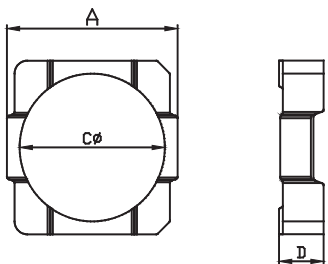


Fig 76

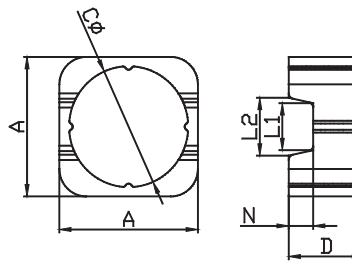


Fig 77

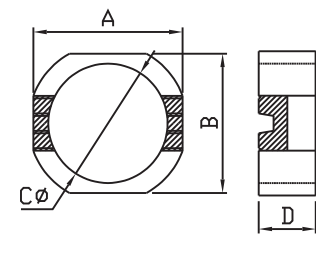


Fig 78

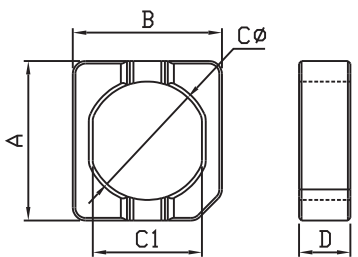


Fig 79

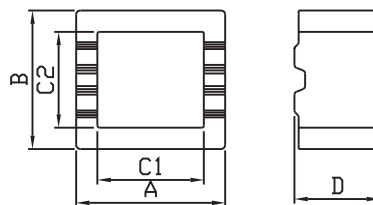


Fig 80

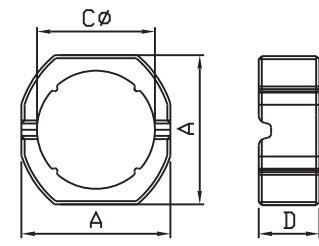


Fig 81

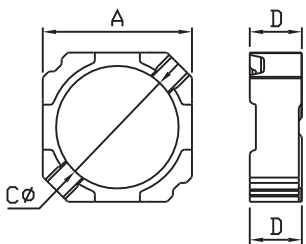


Fig 82

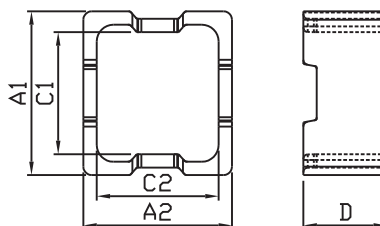


Fig 83

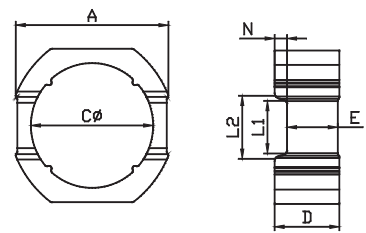


Fig 84

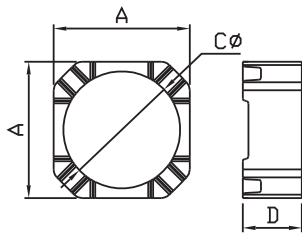


Fig 85

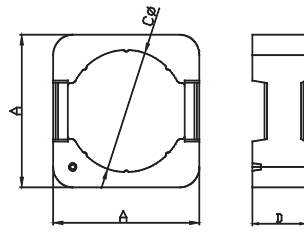


Fig 86

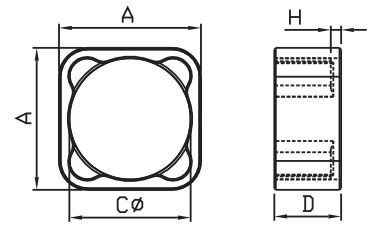


Fig 87

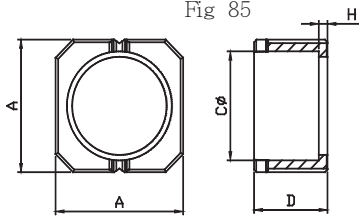


Fig 88

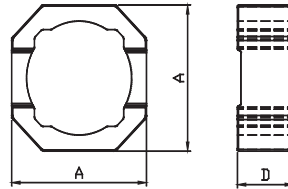


Fig 89

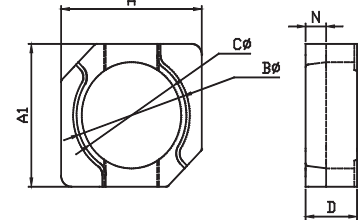


Fig 90

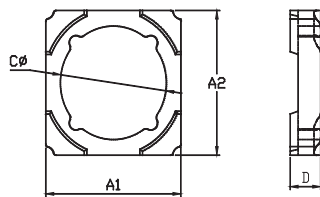


Fig 91

(4)DIMENSIONS(尺寸)

Unit:mm

NO.	CORE	Fig	A	Cψ	D	COMBINED WITH	REMARK
1	SI 2.5x2.05x0.7	19	2.50±0.10	2.05±0.10	0.70±0.10	DR 2x0.8(S) D3	料片 / 電鍍 (SP 2508)
2	SI 2.7x2.1x0.7	11	2.70±0.10	2.10±0.10	0.70±0.10	DR 2x0.9(S)	電鍍
3	SI 2.8x2.1x0.9	70	2.80±0.10	2.10±0.10	0.90±0.10	DR 1.8x0.9(S)	電鍍
4	SI 2.8x2.3x0.9	3	2.80±0.10	2.30±0.10	0.90±0.10	配錳鋅 DR CORE	
5	SI 2.85x2.25x1.3	13	2.85±0.10	2.25±0.10	1.30±0.10	DR 2x1.3 D3	料片
6	SI 2.95x2x1.1	10	2.95±0.10	2.00±0.10	1.10±0.10	DR 1.7x1.1(S)	電鍍
7	SI 3x2.2x0.7	47	3.00±0.10	2.20±0.10	0.70±0.10	DR 1.9x0.85 D3	電鍍
8	SI 3x2.2x1.1	47	3.00±0.10	2.20±0.10	1.10±0.10	DR 2.9x1.6 D3	電鍍
9	SI 3x2.4x0.6	14	3.00±0.10	2.40±0.10	0.60±0.10	DR 3x0.9 D3	料片
10	SI 3x2.4x0.8	6	3.00±0.10	2.40±0.10	0.80±0.10	DR 2.8x0.85 D3	料片 (CDRH 2D09)
11	SI 3x2.4x0.9	81	3.00±0.10	2.40±0.10	0.90±0.10	DR 2.2x0.9 (S)	電鍍
12	SI 3x2.4x1.0	6	3.00±0.10	2.40±0.10	1.00±0.10	DR 2.8x1.2 D3	料片 (CDRH 2D11)
13	SI 3x2.4x1.1	39	3.00±0.10	2.40±0.10	1.10±0.10	DR 2.8x1.05 D3	電鍍 (CDRH 2D11)
14	SI 3x2.4x1.3	6	3.00±0.10	2.40±0.10	1.30±0.10	DR 2.9x1.4 D3	料片 (CDRH 2D14)
15	SI 3x2.4x1.35	39	3.00±0.10	2.40±0.10	1.35±0.10	DR 2.8x1.3 D3	電鍍 (CDRH 2D14)
16	SI 3x2.4x1.5	6	3.00±0.10	2.40±0.10	1.50±0.10	DR 2.8x1.7 D3	料片 (CDRH 2D16)
17	SI 3x2.4x1.6	39	3.00±0.10	2.40±0.10	1.60±0.10	DR 2.8x1.7 D3	電鍍 (CDRH 2D18)
18	SI 3x2.4x2.1	6	3.00±0.10	2.40±0.10	2.10±0.10	DR 2.8x2.3 D3	料片 (CDRH 2D23)
19	SI 3x2.4x1.0	19	3.00±0.10	2.40±0.10	1.00±0.10	DR 2.9x1.3(S) D3	料片 / 電鍍 (SP 03015)
20	SI 3x2.4x1.45	19	3.00±0.10	2.40±0.10	1.45±0.10	DR 2.9x1.7(S) D3	料片 / 電鍍 (SP 03018)

## DIMENSIONS(尺寸)

Unit:mm

NO.	CORE	Fig	A	C $\psi$	D	COMBINED WITH	REMARK
21	SI 3.1x2.2x1.0	4	3.10±0.10	2.20±0.10	1.00±0.10	DR 1.95x1.0(S)	電鍍
22	SI 3.1x2.4x1.1	58	3.10±0.10	2.40±0.10	1.10±0.10	配錳鋅 DR CORE	電鍍
23	SI 3.1x2.5x0.85	41	3.10±0.10	2.50±0.10	0.85±0.10	DR 2.85x1 D3	電鍍
24	SI 3.2x2.4x0.85	57	3.20±0.10	2.40±0.10	0.85±0.10	DR 2.7x0.9 D3	料片
25	SI 3.2x2.5x0.9	58	3.20±0.10	2.50±0.10	0.90±0.10	DR 2.85x1 D3	電鍍
26	SI 3.2x2.5x0.9	60	3.20±0.10	2.50±0.10	0.90±0.10	DR 2.85x1 D3	電鍍
27	SI 3.2x2.5x1.1	59	3.20±0.10	2.50±0.10	1.10±0.10	DR 2.3x1.05(S)	電鍍
28	SI 3.5x2.8x1.4	39	3.50±0.10	2.80±0.10	1.40±0.10	DR 3.2x1.5 D3	電鍍
29	SI 3.5x2.8x1.4	38	3.50±0.10	2.80±0.10	1.40±0.10	DR 3.2x1.5 D3	電鍍
30	SI 3.5x2.8x2	27	3.50±0.10	2.80±0.10	2.00±0.10	SDR 3.2x2x2.5	
31	SI 3.5x3.3x2	27	3.50±0.10	3.30±0.10	2.00±0.10	SDR 3.2x2x2.5	
32	SI 3.8x2.6x1.5	7	3.80±0.10	2.60±0.10	1.50±0.10	DR 2.5x1.4 (S)	電鍍
33	SI 3.8x3x0.7	60	3.80±0.10	3.00±0.10	0.70±0.10	DR 3.5x1.0 D3	電鍍
34	SI 3.8x3x1.68	11	3.80±0.10	3.00±0.10	1.68±0.10	DR 2.8x1.6 (S)	電鍍
35	SI 3.8x3x2.7	10	3.80±0.10	3.00±0.10	2.70±0.10	DR 2.8x1.7 (S)	電鍍
36	SI 3.8x3.1x0.75	61	3.80±0.10	3.10±0.10	0.75±0.10	DR 3.8x1 D3	料片
37	SI 3.8x3.1x0.9	6	3.80±0.10	3.10±0.10	0.90±0.10	DR 3.5x1.05 D3	料片 (CDRH 3D11)
38	SI 3.8x3.1x1.2	41	3.80±0.10	3.10±0.10	1.20±0.10	DR 2.8x1.2 (S)	電鍍
39	SI 3.8x3.1x1.2	68	3.80±0.10	3.10±0.10	1.20±0.10	DR 3.85x1.55 (S) D3	料片/電鍍
40	SI 3.8x3.1x1.2	11	3.80±0.10	3.10±0.10	1.20±0.10	DR 2.8x1.2 (S)	電鍍
41	SI 3.8x3.1x1.2	39	3.80±0.10	3.10±0.10	1.20±0.10	DR 3.5x1.2 D3	電鍍 (CDRH 3D11)
42	SI 3.8x3.1x1.25	6	3.80±0.10	3.10±0.10	1.25±0.10	DR 3.5x1.2 D3	料片 (CDRH 3D14)
43	SI 3.8x3.1x1.4	39	3.80±0.10	3.10±0.10	1.40±0.10	DR 3.5x1.5 D3	電鍍 (CDRH 3D14)
44	SI 3.8x3.1x1.27	6	3.80±0.10	3.10±0.10	1.27±0.10	DR 3.5x1.5 D3	料片 (CDRH 3D16)
45	SI 3.8x3.1x1.6	6	3.80±0.10	3.10±0.10	1.60±0.10	DR 3.5x1.7 D3	料片 (CDRH 3D18)
46	SI 3.8x3.1x1.5	5	3.80±0.10	3.10±0.10	1.50±0.10	DR 3.8x1.6 D3	電鍍 (CDRH 3D18)
47	SI 3.8x3.1x2	6	3.80±0.10	3.10±0.10	2.00±0.10	DR 3.5x2.4 D3	料片 (CDRH 3D23)
48	SI 3.8x3.1x2.5	6	3.80±0.10	3.10±0.10	2.50±0.10	DR 3.5x2.7 D3	料片 (CDRH 3D28)
49	SI 3.8x3.1x2.55	5	3.80±0.10	3.10±0.10	2.55±0.10	DR 3.5x2.7 D3	電鍍 (CDRH 3D28)
50	SI 3.85x3x1.6	89	3.85±0.10	3.00±0.10	1.60±0.10	配錳鋅 DR CORE	

DIMENSIONS(尺寸)

Unit:mm

NO.	CORE	Fig	A	C $\psi$	D	COMBINED WITH	REMARK
51	SI 3.85x3.15x1.2	14	3.85±0.10	3.15±0.10	1.20±0.10	DR 3.85x1.55 D3	料片
52	SI 3.85x3.15x1.2	63	3.85±0.10	3.15±0.10	1.20±0.10	DR 3.85x1.55 D3	料片/電鍍
53	SI 3.9x3.1x1.68	64	3.90±0.10	3.10±0.10	1.68±0.10	DR 2.8x1.6 (S)	電鍍
54	SI 4x3.1x1.7	64	4.00±0.10	3.10±0.10	1.70±0.10	DR 2.7x1.55 (S)	電鍍
55	SI 4x3.2x1.7	81	4.00±0.10	3.20±0.10	1.70±0.10	配錳鋅 DR CORE	電鍍
56	SI 4x3.3x1.3	19	4.00±0.10	3.30±0.10	1.30±0.10	DR 4x1.5 (S) D3	料片/電鍍 (SP 0418)
57	SI 4x3.3x2.4	19	4.00±0.10	3.30±0.10	2.40±0.10	DR 4x2.6 (S) D3	料片/電鍍 (SP 0428)
58	SI 4.1x2.9x1.5	90	4.10±0.10	2.90±0.10	1.50±0.10	DR 2.75x1.55	料片
59	SI 4.2x3.4x0.9	65	4.20±0.10	3.40±0.10	0.90±0.10		
60	SI 4.3x3.5x1.3	58	4.30±0.10	3.50±0.10	1.30±0.10	配錳鋅 DR CORE	電鍍
61	SI 4.45x3.5x1.05	58	4.45 <sup>+0.15</sup> <sub>-0</sub>	3.50 <sup>+0.15</sup> <sub>-0</sub>	1.05±0.10	配錳鋅 DR CORE	電鍍
62	SI 4.5x3.5x1.2	49	4.50±0.10	3.50±0.10	1.20±0.10	DR 3.2x1.3	料片
63	SI 4.6x3.75x1.0	66	4.60±0.15	3.75±0.10	1.00±0.10	DR 4.2x1.28(4S) D3	料片
64	SI 4.6x3.8x1.2	6	4.60±0.10	3.80±0.10	1.20±0.10	DR 4.2x0.9 D3	料片
65	SI 4.7x3.8x0.9	50	4.70±0.10	3.80±0.10	0.90±0.10	DR 3.5x0.8	電鍍 (CLS 4D09)
66	SI 4.7x3.8x1.1	50	4.70±0.10	3.80±0.10	1.10±0.10	DR 3.5x1.0	電鍍 (CLS 4D11)
67	SI 4.7x3.8x1.45	18	4.70±0.10	3.80±0.10	1.45±0.10	DR 4.6x1.7 D3	料片 (CDRH 4D18)
68	SI 4.7x3.8x2.45	18	4.70±0.10	3.80±0.10	2.45±0.10	DR 4.6x2.7 D3	料片 (CDRH 4D28)
69	SI 4.8x3.6xx1.7	7	4.80±0.10	3.60±0.10	1.70±0.10	DR 3.5x1.6 (S)	電鍍
70	SI 4.8x3.8x1.45	8	4.80±0.10	3.80±0.10	1.45±0.10	DR 4.6x1.8 D3	電鍍
71	SI 4.8x4x1.2	39	4.80±0.10	4.00±0.10	1.20±0.10	DR 4.4x1.2 D3	電鍍
72	SI 4.8x4.1x1.1	40	4.80±0.10	4.10±0.10	1.10±0.10	DR 4.8x1.7 D3	料片(CDRH 4D18)
73	SI 4.8x4.1x1.55	5	4.80±0.10	4.10±0.10	1.55±0.10	DR 4.8x1.7 D3	電鍍 (CDRH 4D18)
74	SI 4.8x4.1x1.5	40	4.80±0.10	4.10±0.10	1.50±0.10	DR 4.8x2.2 D3	料片 (CDRH 4D25)
75	SI 4.8x4.1x1.8	40	4.80±0.10	4.10±0.10	1.80±0.10	DR 4.8x2.2 D3	電鍍 (CDRH 4D25)
76	SI 4.8x4.1x2.1	40	4.80±0.10	4.10±0.10	2.10±0.10	DR 4.8x2.7 D3	料片 (CDRH 4D28)
77	SI 4.8x4.1x2.5	5	4.80±0.10	4.10±0.10	2.50±0.10	DR 4.8x2.7 D3	電鍍 (CDRH 4D28)
78	SI 4.8x4.1x1.6	67	4.80±0.10	4.10±0.10	1.60±0.10	DR 3.8x1.75 (S)	料片
79	SI 4.8x4.1x1.6	22	4.80±0.10	4.10±0.10	1.25±0.10	DR 4.8x1.7 D3	電鍍
80	SI 4.9x3.9x2.1	43	4.90±0.10	3.90±0.10	2.10±0.10	DR 4.8x2.8 D3	料片/電鍍



## DIMENSIONS(尺寸)

Unit:mm

NO.	CORE	Fig	A	C $\psi$	D	COMBINED WITH	REMARK
81	SI 4.9x4.1x1.6	69	4.90±0.10	4.10±0.10	1.60±0.10	DR 3.8x1.75 (S)	料片
82	SI 5x3.8x1.65	73	5.00±0.10	3.80±0.10	1.65±0.10	DR 4.5x1.65 (S) D3	料片/電鍍
83	SI 5x4x1.75	74	5.00±0.10	4.00±0.10	1.75±0.10	配錳鋅 DR CORE	料片
84	SI 5x4x1.8	14	5.00±0.10	4.00±0.10	1.80±0.10	DR 3.7x2 (S)	料片
85	SI 5x4x2.4	27	5.00±0.10	4.00±0.10	2.40±0.10	SDR 4.5x2.6x3.2	
86	SI 5x4.1x1.85	58	5.00±0.10	4.10±0.10	1.85±0.10	配錳鋅 DR CORE	電鍍
87	SI 5x4.1x1.85	81	5.00±0.10	4.10±0.10	1.85±0.10	配錳鋅 DR CORE	電鍍
88	SI 5x4.1x2.25	55	5.00±0.10	4.10±0.10	2.25±0.10	DR 4.9x2.7 (S) D3	料片
89	SI 5x4.4x1.4	19	5.00±0.10	4.40±0.10	1.40±0.10	DR 5x1.6 (4S) D3	料片/電鍍 (SP 0518)
90	SI 5x4.4x2.4	19	5.00±0.10	4.40±0.10	2.40±0.10	DR 5x2.6 (4S) D3	料片/電鍍 (SP0 528)
91	SI 5.05x3.85x1.0	10	5.05±0.10	3.85±0.10	1.00±0.10	DR 3.6x1.0 (S)	電鍍
92	SI 5.05x3.9x1.1	70	5.05±0.10	3.90±0.10	1.10±0.10	DR 3.5x1.1 (S)	電鍍
93	SI 5.05x3.9x1.1	71	5.05±0.10	3.90±0.10	1.10±0.10	DR 3.5x1.1 (S)	電鍍
94	SI 5.05x4.1x1.7	11	5.05±0.10	4.10 <sup>+0.15</sup> <sub>-0</sub>	1.70±0.10	DR 3.9x1.7 (S)	電鍍
95	SI 5.05x4.1x1.7	14	5.05±0.10	4.10±0.10	1.70±0.10	DR 3.9x1.7 (S)	料片
96	SI 5.05x4.1x1.7	72	5.05±0.10	4.10 <sup>+0.20</sup> <sub>-0.05</sub>	1.70±0.10	DR 3.9x1.7 (S)	電鍍
97	SI 5.05x4.2x1.7	81	5.05±0.10	4.20±0.10	1.70±0.10	DR 3.9x1.7 (S)	電鍍
98	SI 5.1x4.2x1.05	10	5.10±0.10	4.20±0.10	1.05±0.10	DR 3.9x1 (S)	電鍍
99	SI 5.1x4x1.15	91	5.10±0.10	4.00±0.10	1.15±0.10	DR 5x1.15 (S) D3	電鍍
100	SI 5.15x4.35x2.8	77	5.10±0.15	4.35±0.15	2.80±0.10	DR 3.85x2.8 RCH	料片
101	SI 5.2x3.8x1.8	12	5.20±0.10	3.80±0.10	1.80±0.10	DR 4.5x1.65 (S) D3	料片/電鍍
102	SI 5.2x3.9x2.8	73	5.20±0.10	3.90±0.10	2.80±0.10	DR 3.8x2.7 (S)	料片/電鍍
103	SI 5.2x4.15x1.05	10	5.20±0.10	4.15±0.10	1.05±0.10	DR 3.9x1 (S)	電鍍
104	SI 5.6x3.7x1.55	15	5.60±0.15	3.70±0.10	1.55±0.10	DR 3.5x1.8	料片/電鍍 (SLQ 52)
105	SI 5.6x4.8x1.1	40	5.60±0.15	4.80±0.10	1.10±0.10	DR 5.6x1.7 D3	料片 (CDRH 5D18)
106	SI 5.6x4.8x1.3	5	5.60±0.15	4.80±0.10	1.30±0.10	DR 5.6x1.5 D3	電鍍 (CDRH 5D18)
107	SI 5.6x4.8x2	40	5.60±0.15	4.80±0.10	2.00±0.10	DR 5.6x2.7 D3	料片 (CDRH 5D28)
108	SI 5.6x4.8x2.55	5	5.60±0.15	4.80±0.10	2.55±0.10	DR 5.6x2.7 D3	電鍍 (CDRH 5D28)
109	SI 5.6x4.8x2.4	22	5.60±0.15	4.80±0.10	2.40±0.10	DR 5.6x2.6 D3	電鍍 (CDRH 5D28)
110	SI 5.7x4.3x3.15	17	5.70±0.15	4.30±0.10	3.15±0.10	DR 4x2.8 DM	料片

## DIMENSIONS(尺寸)

Unit:mm

NO.	CORE	Fig	A	C $\psi$	D	COMBINED WITH	REMARK
111	SI 5.7x4.7x1.45	18	5.70±0.15	4.70±0.10	1.45±0.10	DR 5.6x1.7 D3	料片 (CDRH 5D18)
112	SI 5.7x4.7x2.45	18	5.70±0.15	4.70±0.10	2.45±0.10	DR 5.6x2.7 D3	料片(CDRH 5D18)
113	SI 5.7x4.9x1.45	18	5.70±0.15	4.90±0.10	1.45±0.10	DR 5.6x1.7 D3	料片
114	SI 5.8x4.1x2.1	31	5.80±0.15	4.10±0.10	2.10±0.10	DR 3.8x2.1	料片電鍍
115	SI 5.8x4.4x1.7	7	5.80±0.15	4.40±0.10	1.70±0.10	DR 4.3x1.6 (S)	電鍍
116	SI 5.85x4.9x2.7	11	5.85±0.15	4.90±0.10	2.70±0.10	DR 4.5x2.65 (S)	電鍍
117	SI 6x4.4x2.5	24	6.00±0.15	4.40±0.10	2.50±0.10	DR 4x2.4 (S)	料片
118	SI 6x4.7x2.4	37	6.00±0.15	4.70±0.10	2.40±0.10	DR 5.6x2.7 D3	料片
119	SI 6x4.8x2.2	86	6.00±0.15	4.80±0.15	2.20±0.10	DR 4.55x2.2 (S)	料片
120	SI 6x4.8x2.35	75	6.00±0.15	4.80±0.10	2.35±0.10	DR 4.6x2.3 (S)	電鍍
121	SI 6x4.8x1.6	25	6.00±0.15	4.80±0.10	1.60±0.10	DR 4.5x1.7 (S)	料片
122	SI 6x4.8x3.3	81	6.00±0.15	4.80±0.15	3.30±0.10	配錳鋅 DR CORE	電鍍
123	SI 6x4.85x2.3	78	6.00±0.15	4.85±0.10	2.30±0.10	DR 4.5x2.3 (S)	電鍍
124	SI 6x4.85x2.6	25	6.00±0.15	4.85±0.10	2.60±0.10	DR 4.5x2.7 (S)	料片
125	SI 6x5x1.35	58	6.00±0.15	5.00±0.15	1.40±0.10	配錳鋅 DR CORE	電鍍
126	SI 6x5x2	26	6.00±0.15	5.00±0.15	2.00±0.10	DR 4.6x2.3 D3	料片
127	SI 6x5x2.25	19	6.00±0.15	5.00±0.15	2.25±0.10	DR 5.9x2.65 (S) D3	料片/電鍍
128	SI 6x5.2x2.2	46	6.00±0.15	5.20±0.15	2.20±0.10	DR 4.75x2.6	料片
129	SI 6x5.2x1.7	42	6.00±0.15	5.20±0.15	1.70±0.10	DR 4.9x1.8 (S)	電鍍
130	SI 6.2x4.4x2.3	20	6.20±0.15	4.40±0.10	2.30±0.10	DR 4x2.4	料片(CDRH 63B)
131	SI 6.2x4.4x4.3	20	6.20±0.15	4.40±0.10	4.30±0.10	DR 4x4.3	料片(CDRH 64B)
132	SI 6.2x4.6x2	79	6.20±0.15	4.60±0.10	2.00±0.10	DRT 4.5x2.9	
133	SI 6.2x4.9x2.2	11	6.20±0.15	4.90±0.10	2.20±0.10	DR 4.6x2.2 (S)	電鍍
134	SI 6.2x5.2x2.7	39	6.20±0.15	5.20±0.15	2.70±0.10	DR 5.9x2.8 D3	電鍍
135	SI 6.3x4.15x1.0	21	6.30±0.15	4.15±0.10	1.00±0.10		
136	SI 6.3x4.25x0.8	21	6.30±0.15	4.25±0.10	0.80±0.10		
137	SI 6.3x4.85x1.2	50	6.30±0.15	4.85±0.15	1.20±0.10	DR 4.5x1.2	電鍍
138	SI 6.3x4.9x2.1	53	6.30±0.15	4.90±0.10	2.10±0.10	DR 4.1x2.4	料片
139	SI 6.3x5.3x3.2	27	6.30±0.15	5.30±0.15	3.20±0.10	SDR 5.7x4.7x5	
140	SI 6.3x5.3x1.3	56	6.30±0.15	5.30±0.15	1.30±0.10	SDR 6.3x6.3x1.85	

## DIMENSIONS(尺寸)

Unit:mm

NO.	CORE	Fig	A	C $\psi$	D	COMBINED WITH	REMARK
141	SI 6.4x5.2x3.1	86	6.40±0.15	5.20±0.15	3.10±0.10	配錳鋅 DR CORE	料片
142	SI 6.6x5.7x1.2	40	6.60±0.15	5.70±0.15	1.20±0.10	DR 6.6x1.7 D3	料片/電鍍 (CDRH 6D28)
143	SI 6.6x5.7x2	40	6.60±0.15	5.70±0.15	2.00±0.10	DR 6.6x2.7 D3	料片/電鍍 (CDRH 6D28)
144	SI 6.6x5.7x2.5	22	6.60±0.15	5.70±0.15	2.50±0.10	DR 6.6x2.7 D3	電鍍 (CDRH 6D28)
145	SI 6.6x5.7x3	40	6.60±0.15	5.70±0.15	3.00±0.10	DR 6.6x3.7 D3	料片/電鍍 (CDRR 6D38)
146	SI 6.6x5.7x3.4	22	6.60±0.15	5.70±0.15	3.40±0.10	DR 6.6x3.7 D3	電鍍 (CDRH 6D38)
147	SI 6.7x4.7x1.8	23	6.70±0.15	4.70±0.10	1.80±0.10	DR 4.5x2.1	料片 (CLQ72)
148	SI 6.7x4.7x2.8	23	6.70±0.15	4.70±0.10	2.80±0.10	DR 4.5x3.1	料片 (CLQ74)
149	SI 6.7x5.5x2.5	18	6.70±0.15	5.50±0.15	2.50±0.10	DR 6.6x2.7 D3	料片 (CDRH 6D28)
150	SI 6.7x5.5x3.5	18	6.70±0.15	5.50±0.15	3.50±0.10	DR 6.6x3.7 D3	料片 (CDRH 6D38)
151	SI 6.7x5.7x1.7	76	6.70±0.15	5.70±0.15	1.70±0.10	DR 6.6x2.2 D3	料片
152	SI 6.7x5.6x1.4	52	6.70±0.15	5.60±0.15	1.40±0.10	DR 6.6x1.7 D3	料片 (CDRH 6D38)
153	SI 6.7x5.8x3.5	18	6.70±0.15	5.80±0.15	3.50±0.10	DR 6.6x3.7 D3	料片 (CDRH 6D38)
154	SI 6.8x5.4x2.2	7	6.80±0.15	5.40±0.15	2.20±0.10	DR 5.3x2.1 (S)	電鍍
155	SI 6.9x5.3x1.3	70	6.90±0.15	5.30±0.15	1.30±0.10	DR 5x1.3 (S)	電鍍
156	SI 6.9x6x2.3	55	6.90±0.15	6.00±0.15	2.30±0.10	DR 5.6x2.5 (S)	電鍍
157	SI 7x5.1x1.7	58	7.00±0.15	5.10±0.15	1.70±0.10	配錳鋅 DR CORE	電鍍
158	SI 7x5.6x1.06	52	7.00±0.15	5.60±0.15	1.06±0.10	DR 5x1.35	料片
159	SI 7x5.8x3.7	86	7.00±0.15	5.80±0.15	3.70±0.10	配錳鋅 DR CORE	料片
160	SI 7x6.5x5.1	80	7.00±0.15	6.50±0.15	5.10±0.15	I 5x3.5x4	電鍍
161	SI 7.2x5.7x3.8	81	7.20±0.15	5.70±0.15	3.80±0.10	配錳鋅 DR CORE	
162	SI 7.3x5.7x1.1	29	7.30±0.15	5.70±0.15	1.10±0.10	DR 5.3x1.1	電鍍
163	SI 7.3x5.7x3.5	28	7.30±0.15	5.70±0.15	3.50±0.10	DR 5.3x3.6	料片 (CDRH 74)
164	SI 7.3x5.8x0.9	58	7.30±0.15	5.80±0.15	0.90±0.10	配錳鋅 DR CORE	電鍍
165	SI 7.3x5.7x2.7	28	7.30±0.15	5.70±0.15	2.70±0.10	DR 5.3x2.8	料片 (CDRH 73)
166	SI 7.3x5.9x1.7	81	7.30±0.15	5.90±0.15	1.70±0.10	配錳鋅 DR CORE	電鍍
167	SI 7.3x5.9x2.5	28	7.30±0.15	5.90±0.15	2.50±0.10	DR 5.3x2.8	料片 (CDRH 73)
168	SI 7.3x6x0.9	58	7.30±0.15	6.00±0.15	0.90±0.10	配錳鋅 DR CORE	電鍍
169	SI 7.3x6x2.7	51	7.30±0.15	6.00±0.15	2.70±0.10	DR 5.4x3 (S)	電鍍
170	SI 7.3x6x2.5	82	7.30±0.15	6.00±0.15	2.50±0.10	DR 6.5x2.5 (S) D3	電鍍 (CDR 7D28)

## DIMENSIONS(尺寸)

Unit:mm

NO.	CORE	Fig	A	C $\psi$	D	COMBINED WITH	REMARK
171	SI 7.3x6x3	70	7.30±0.15	6.00±0.15	3.00±0.10	DR 5.4x2.9(S)	電鍍
172	SI 7.3x6x3.8	82	7.30±0.15	6.00±0.15	3.80±0.10	DR 6.5x4(S) D3	電鍍 (CDR 7D43)
173	SI 7.3x6x3.5	88	7.30±0.15	6.00±0.15	3.50±0.10	DR 5.3x4.2	電鍍
174	SI 7.3x6.2x2.8	24	7.30±0.15	6.20±0.15	2.80±0.10	DR 5.1x2.85	料片
175	SI 7.5x5.9x1.5	81	7.50±0.15	5.90±0.15	1.50±0.10	配錳鋅 DR CORE	電鍍
176	SI 7.5x5.9x3.4	84	7.50±0.15	5.90±0.15	3.40±0.10	配錳鋅 DR CORE	料片
177	SI 7.5x6.6x3.8	38	7.50±0.15	6.60±0.15	3.80±0.10	DR 7.2x4.2 D3	電鍍/料片
178	SI 7.7x5.6x2.7	31	7.70±0.15	5.60±0.15	2.70±0.10	DR 5.3x2.9	料片
179	SI 7.7x5.9x1.8	31	7.70±0.15	5.90±0.15	1.80±0.10	DR 5.5x1.8	料片 (CLQ 72D23)
180	SI 7.7x5.9x2.8	31	7.70±0.15	5.90±0.15	2.80±0.10	DR 5.5x2.8	料片 (CLQ 7D37)
181	SI 7.7x6.1x3.1	51	7.70±0.15	6.10±0.15	3.10±0.10	DR 5.4x3(S)	電鍍
182	SI 7.8x5.6x2.8	32	7.80±0.15	5.60±0.15	2.80±0.15	DR 5.4x1.8	料片
183	SI 8x5.8x2.2	33	8.00±0.15	5.80±0.15	2.20±0.10	DR 5.6x2.7(S)	料片
184	SI 8x6.2x2.1	84	8.00±0.15	6.20±0.15	2.10±0.10	DR 5.85x2.1(S)	料片
185	SI 8x6.4x2.05	34	8.00±0.15	6.40±0.15	2.05±0.10	DR 7.65x2.55(S) D3	料片
186	SI 8x6.5x2.1	35	8.00±0.15	6.50±0.15	2.10±0.10	DR 8x2.7 D3	料片 (CDRH 8D28)
187	SI 8x6.5x2.2	55	8.00±0.15	6.50±0.15	2.20±0.10	DR 8x2.7 D3	電鍍 (CDRH 8D28)
188	SI 8x6.5x3.4	35	8.00±0.15	6.50±0.15	3.40±0.10	DR 8x4.2 D3	料片 (CDRH 8D43)
189	SI 8x6.5x3.5	55	8.00±0.15	6.50±0.15	3.50±0.10	DR 8x4.2 D3	電鍍 (CDRH 8D43)
190	SI 8x6.6x2.1	55	8.00±0.15	6.60±0.15	2.10±0.10	DR 8x2.7(S) D3	電鍍 (CDRH 8D28)
191	SI 8x6.7x5.8	42	8.00±0.15	6.70±0.15	5.80±0.15	DR 6.3x6(S)	料片
192	SI 8x7x2.5	38	8.00±0.15	7.00±0.15	2.50±0.10	DR 7.7x2.7	電鍍
193	SI 9.8x7.3x4	83	9.80±0.15	7.30±0.15	4.00±0.10	DR 7x4.2	料片
194	SI 9.7x8.2x5.7	36	9.70±0.15	8.20±0.15	5.70±0.15	DR 7.4x5.8	料片
195	SI 10x7.9x3.7	33	10.0±0.15	7.90±0.15	3.70±0.10	DR 7.5x3.7(S)	電鍍
196	SI 10x8x3.7	26	10.0±0.15	8.00±0.15	3.70±0.10	DR 7.6x4	料片
197	SI 10x8x3.7	51	10.0±0.15	8.00±0.15	3.70±0.10	DR 7.5x3.7(S)	電鍍
198	SI 10x8x3.7	70	10.0±0.15	8.00±0.15	3.70±0.10	DR 7.5x3.7(S)	電鍍
199	SI 10x8.2x2.2	84	10.0±0.15	8.20±0.15	2.20±0.15	DR 7.8x2.2 D3	料片
200	SI 10x8.2x2.6	40	10.0±0.15	8.20±0.15	2.60±0.10	DR 10x3.6 D3	電鍍

## DIMENSIONS(尺寸)

Unit:mm

NO.	CORE	Fig	A	C $\psi$	D	COMBINED WITH	REMARK
201	SI 10x8.2x2.4	37	10.0±0.15	8.20±0.15	2.40±0.10	DR 9.7x2.7 D3	料片 (CDRH 103R)
202	SI 10x8.2x3.2	37	10.0±0.15	8.20±0.15	3.20±0.10	DR 9.7x3.6 D3	料片 (CDRH 104R)
203	SI 10x8.2x3.8	81	10.0±0.15	8.20±0.15	3.80±0.15	DR 7.6x3.6 D3	電鍍
204	SI 10x8.2x4.3	37	10.0±0.15	8.20±0.15	4.30±0.10	DR 9.7x4.7 D3	料片 (CDRH 105R)
205	SI 10x8.2x4.9	37	10.0±0.15	8.20±0.15	4.90±0.15	DR 9.7x5.5 D3	料片 (CDRH 106R)
206	SI 10x8.2x4.3	82	10.0±0.15	8.20±0.15	4.30±0.10	DR 9.85x4.6 (S) D3	電鍍 (CDR 10D48)
207	SI 10x8.4x6	1	10.0±0.15	8.40±0.15	6.00±0.15	DR 7.6x6	料片
208	SI 10x8.5x2.85	44	10.0±0.15	8.50±0.15	2.85±0.10	DR 9.4x4.1 D3	料片
209	SI 10x8.5x4.2	1	10.0±0.15	8.50±0.15	4.20±0.10	DR 8x4.1	料片
210	SI 10x8.6x2.7	40	10.0±0.15	8.60±0.15	2.70±0.10	DR 10x3.6 D3	料片/電鍍
211	SI 10x8.6x3.4	38	10.0±0.15	8.60±0.15	3.40±0.10	DR 10x3.6 D3	料片/電鍍
212	SI 10.1x8.2x4.1	25	10.1±0.15	8.20±0.15	4.10±0.10	DR 7.8x4.25 (S)	料片
213	SI 10.1x8.4x3.3	37	10.1±0.15	8.40±0.15	3.30±0.10	DR 9.7x3.6 D3	料片 (CDRH 104R)
214	SI 10.1x8.6x3.9	1	10.1±0.15	8.60±0.15	3.90±0.10	DR 7.9x4	料片
215	SI 10.2x8.4x6	1	10.2±0.15	8.40±0.15	6.00±0.10	DR 7.6x6	料片
216	SI 11.4x8.5x1.5	54	11.4±0.15	8.50±0.15	1.50±0.10	DR 9.4x2.1 D3	料片 (CLQ102)
217	SI 11.4x8.5x3.4	54	11.4±0.15	8.50±0.15	3.40±0.10	DR 9.4x3.6 D3	料片 (CLQ104)
218	SI 12x10.3x5.2	85	12.0±0.15	10.3±0.15	5.20±0.15	DR 9.8x5	料片
219	SI 12x10.4x3.65	1	12.0±0.15	10.4±0.15	3.65±0.10	DR 10x3.9	料片
220	SI 12x10.5x5.5	1	12.0±0.15	10.5±0.15	5.50±0.15	DR 9.5x5.5	料片
221	SI 12x10.5x6.7	1	12.0±0.15	10.5±0.15	6.70±0.15	DR 9.6x6.9	料片
222	SI 12x10.7x4	1	12.0±0.15	10.7±0.15	4.00±0.15	DR 9.9x4	料片 (CDRH 124)
223	SI 12x10.7x5	1	12.0±0.15	10.7±0.15	5.00±0.15	DR 9.9x5.1	料片 (CDRH125)
224	SI 12x10.7x6.8	1	12.0±0.15	10.70.15	6.80±0.15	DR 9.9x6.9	料片 (CDRH 127)
225	SI 12.1x10.6x4.28	86	12.1±0.15	10.6±0.15	4.28±0.15	DR 9.9x4.95	料片
226	SI 12.3x10.85x3.5	1	12.3±0.15	10.85±0.15	3.50±0.15	DR 10x3.8	料片 (CDRH 124)
227	SI 12.3x10.85x5	1	12.3±0.15	10.85±0.15	5.00±0.15	DR 10x5.2	料片 (CDRH 125)
228	SI 12.3x10.85x6.8	1	12.3±0.15	10.85±0.15	6.80±0.15	DR 10x7	料片 (CDRH 127)
229	SI 12.4x10.4x6.11	51	12.4±0.15	10.4±0.15	6.10±0.15	DR 9.6x6 (S)	電鍍
230	SI 12.4x10.4x6.4	45	12.4±0.015	10.4±0.15	6.40±0.15	DR 9.6x6 (S)	料片

DIMENSIONS(尺寸)

Unit:mm

NO.	CORE	Fig	A	C $\psi$	D	COMBINED WITH	REMARK
231	SI 12.5x10.5x6.6	1	12.5 $\pm$ 0.15	10.5 $\pm$ 0.15	6.60 $\pm$ 0.15	DR 9.6/9.8x7	料片
232	SI 12.5x10.6x3.45	25	12.5 $\pm$ 0.15	10.6 $\pm$ 0.15	3.45 $\pm$ 0.10	DR 10x3.5 (S)	料片
233	SI 12.5x10.85x6.8	1	12.5 $\pm$ 0.15	10.85 $\pm$ 0.15	6.80 $\pm$ 0.15	DR 9.8x7	料片
234	SI 12.5x10.9x5.8	2	12.5 $\pm$ 0.15	10.9 $\pm$ 0.15	5.80 $\pm$ 0.15	DR 12.5x6.9 (S) D3	料片
235	SI 12.6x10.6x6	1	12.6 $\pm$ 0.15	10.6 $\pm$ 0.15	6.00 $\pm$ 0.15	DR 9.5x7 (S)	料片
236	SI 13x11.2x3.2	40	13.0 $\pm$ 0.15	11.2 $\pm$ 0.15	3.20 $\pm$ 0.10	DR 13x4.2 D3	料片
237	SI 13.8x11.8x2.5	62	13.8 $\pm$ 0.15	11.8 $\pm$ 0.15	2.50 $\pm$ 0.15	DR 11x3	料片
238	SI 13.8x11.8x6.5	87	13.8 $\pm$ 0.15	11.8 $\pm$ 0.15	6.50 $\pm$ 0.15	DR 11x7.05	料片
239	SI 14.8x12.7x10	1	14.8 $\pm$ 0.25	12.7 $\pm$ 0.20	10.0 $\pm$ 0.15	DR 12x10	料片
240	SI 15.1x13.1x9.5	1	15.1 $\pm$ 0.25	13.1 $\pm$ 0.20	9.50 $\pm$ 0.15	DR 12x9.7	料片