

## RID TYPE

### (1) ORDERING CODE 產品名稱

C6    RID    7.5 x 10.3 x 13.3    H4.0  
 Material    Type    Length(A)    Width(B)    Thickness(D)    Hole(CØ)  
 材質    形狀    長度(A)    寬度(B)    高度(D)    內孔(CØ)

### (2) SUITABLE MATERIAL (適用材質)

C5A.C5,C6,E2F.....

### (3) SHAPE (圖形標示)

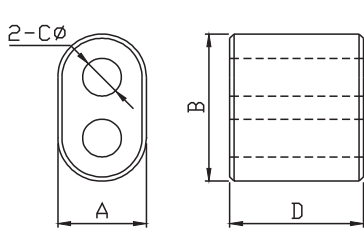


Fig 1

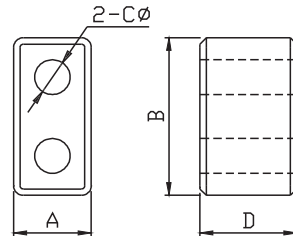


Fig 2

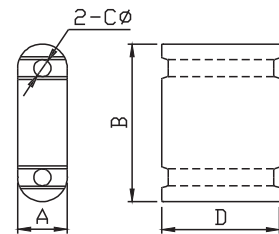


Fig 3

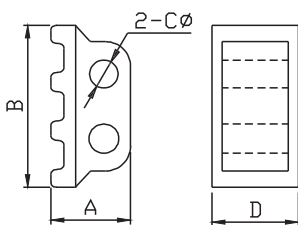


Fig 4

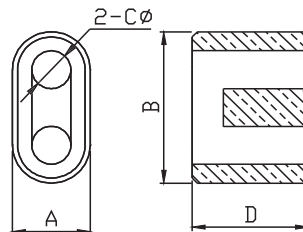


Fig 5

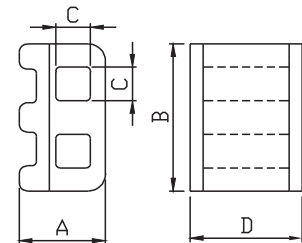


Fig 6

### (4) DIMENSIONS (尺寸)

Unit:mm

NO.	CORE	Fig	A	B	Cψ	D
1	RID 1.3x2x3.2 H0.7/H0.8	2	1.30±0.20	3.20±0.20	0.70 ±0.10 0.80	2.00±0.20
2	RID 1.5x2x3 H0.8	2	1.50±0.20	3.00±0.20	0.80±0.10	2.00±0.20
3	RID 1.5x2x3.5 H0.9	1	1.50±0.20	3.50±0.20	0.90±0.10	2.00±0.20
4	RID 2x1.5x3.5 H0.9	1	2.00±0.20	3.50±0.20	0.90±0.10	1.50±0.20
5	RID 2x2.6x3.5-M H0.8	6	2.00±0.20	3.50±0.20	0.80±0.10	2.60±0.20

(4) DIMENSIONS (尺寸)

Unit:mm

NO.	CORE	Fig	A	B	C $\psi$	D
6	RID2x2.8x5 H1.1	1	2.00±0.20	5.00±0.20	1.10±0.15	2.80±0.20
7	RID 2x3x4.8 H1.1	1	2.00±0.20	4.80±0.20	1.10±0.15	3.00±0.20
8	RID 2.3x3x4.8 H1.0	2	2.30±0.20	4.80±0.20	1.00±0.15	3.00±0.20
9	RID 2.3x5x7.5 H0.8	3	2.30±0.20	7.20±0.20	0.80±0.10	5.00±0.20
10	RID 2.4x2.6x5-M H0.9	4	2.40±0.20	5.00±0.20	0.90±0.10	2.60±0.20
11	RID 2.4x3x5 H1.1/1.2	2	2.40±0.20	5.00±0.20	1.10 ±0.15 1.20	3.00±0.20
12	RID 2.6x2x5.1/5.3 H1.4/1.2	1	2.60±0.20	5.10 ±0.20 5.30	1.20 ±0.10 1.40	2.00±0.20
13	RID 3x3x6.4 H1.0	1	3.00±0.20	6.40±0.20	1.00±0.15	3.00±0.20
14	RID 3x5x6 H1.2/1.5	1	3.00±0.20	6.00±0.20	1.20 ±0.15 1.50	5.00±0.20
15	RID 3x3x5 H1.25/1.5	1	3.00±0.20	5.00±0.20	1.25 ±0.15 1.50	3.00±0.20
16	RID 3x4.5x6 H1.5	5	3.00±0.20	6.00±0.20	1.50±0.15	4.50±0.20
17	RID 3x5.8x6 H0.9	1	3.00±0.20	6.00±0.20	0.90±0.10	5.80±0.20
18	RID 3.5x5x6.5 H1.8	1	3.50±0.20	6.50±0.20	1.80±0.15	5.00±0.20
19	RID 3.8x10x6.9 H1.9	2	3.80±0.20	6.90±0.20	1.90±0.15	10.0±0.20
20	RID 4.1x3.2x7 H1.6/1.8	1	4.10±0.20	7.00±0.20	1.60 ±0.15 1.80	3.20±0.20
21	RID 4.1x4x6.6 H2.0	1	4.10±0.20	6.60±0.20	2.00±0.15	4.00±0.20
22	RID 4.1x6.6x7 H1.8	1	4.10±0.20	7.00±0.20	1.80±0.15	6.60±0.20
23	RID 5.35x8x9.4 H2.6	2	5.35±0.20	9.40±0.20	2.60±0.15	8.00±0.20
24	RID 6.3x3x11.6 H3.7	1	6.30±0.20	11.6±0.20	3.70±0.15	3.00±0.20
25	RID 6.5x4x12 H3.8/4.0	1	6.50±0.20	12.0±0.30	3.80 ±0.15 4.00	4.00±0.20
26	RID 7.4x14.7x13.4 H3.8	1	7.40±0.20	13.4±0.30	3.80±0.15	14.7±0.30
27	RID 7.5x4x13.5 H4.2	1	7.50±0.20	13.5±0.30	4.20±0.15	4.00±0.20
28	RID 7.5x7x13.3 H4.0	1	7.50±0.20	13.3±0.30	4.00±0.15	7.00±0.20
29	RID 8x7x15 H5.0	1	8.00±0.20	15.0±0.30	5.00±0.15	7.00±0.20
30	RID 10x15x20 H5.25	1	10.0±0.30	20.0±0.40	5.25±0.15	15.0±0.30