

R TYPE

(1) ORDERING CODE 產品名稱

C6 R 1.65 x 14 (R)
 | | | | | |
 Material Type Outside Diameter(AΦ) Length(D) Grinding
 材質 形狀 外徑(AΦ) 長度(D) 研磨外徑

(2) SUITABLE MATERIAL (適用材質)

F4D, C5A, C5C, C6, E2, E2F.....

(3) SHAPE (圖形標示)

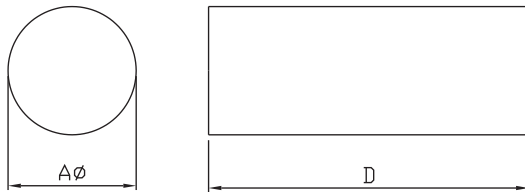
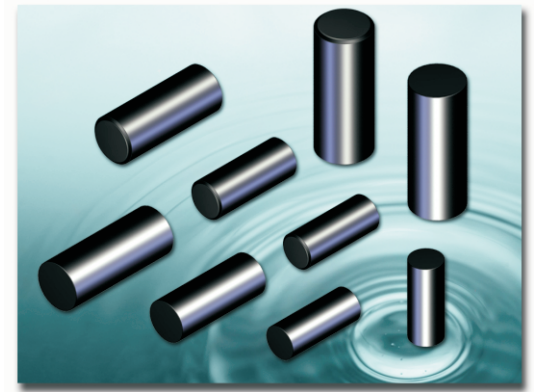


Fig 1

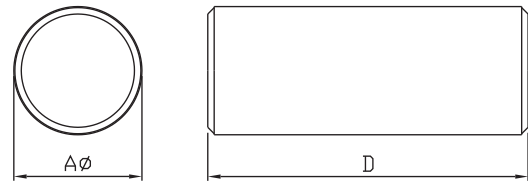


Fig 2

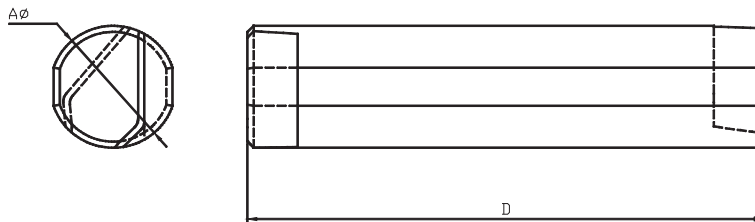


Fig 3

(4) DIMENSIONS (尺寸)

Unit:mm

NO.	CORE	Fig	Aψ	D
1	R 1×2.65	1	1.00±0.10	2.65±0.15
2	R 1.2×4.5	1	1.20±0.10	4.50±0.20
3	R 1.5×5	1	1.50±0.10	5.00±0.20
4	R 1.65×14	1	1.65±0.10	14.0±0.30
5	R 1.85×7.7	1	1.85±0.10	7.70±0.20
6	R 1.9×6.5	1	1.90±0.10	6.50±0.20
7	R 2×14	1	2.00±0.10	14.0±0.30
8	R 2.26×2.15	1	2.26±0.10	2.15±0.20

DIMENSIONS(尺寸)

Unit:mm

NO.	CORE	Fig	A ψ	D
9	R 2.6x20	1	2.60±0.10	20.0±0.40
10	R 3x25	2	3.00±0.10	25.0±0.50
11	R 3.3x17.5	2	3.30±0.10	17.5±0.30
12	R 3.5x25	2	3.50±0.10	25.0±0.50
13	R 3.9×16.5(E)	3	3.90±0.10	16.5±0.50
14	R 4×25	2	4.00±0.20	25.0±0.50
15	R 4.4x20	2	4.40±0.20	20.0±0.40
16	R 4.9x20(E)	3	4.90±0.20	20.0±0.40
17	R 5x30	2	5.00±0.20	30.0±0.50
18	R 5.35x15	2	5.35±0.20	15.0±0.30
19	R 5.5x21	2	5.50±0.20	21.0±0.40
20	R 5.8×30	2	5.80±0.20	30.0±0.40
21	R 6x20	2	6.00±0.20	20.0±0.40
22	R 6x25	2	6.00±0.20	25.0±0.50
23	R 6x38	2	6.00±0.20	38.0±0.60
24	R 6x29(E)	3	6.00±0.20	29.0±0.60
25	R 6.35x30	2	6.35±0.20	30.0±0.50
26	R 6.5x38	2	6.50±0.20	38.0±0.60
27	R 7x38	2	7.00±0.20	38.0±0.60
28	R 7.5×20	2	7.50±0.20	20.0±0.40
29	R 8x38	2	8.00±0.20	38.0±0.60
30	R 8.6×12	2	8.60±0.20	12.0±0.30
31	R 9.5x22.5	2	9.50±0.20	22.5±0.40
32	R 10x38	2	10.0±0.30	38.0±0.60
33	R 11×30	2	11.0±0.30	30.0±0.50
34	R 12x25	2	12.0±0.30	25.0±0.50
35	R 16x12	2	16.0±0.30	12.0±0.30
36	R 19×38	2	19.0±0.30	38.0±0.60
37	R 20x25	2	20.0±0.30	25.0±0.50
38	R 21x40	2	21.0±0.40	40.0±0.80