

## P TYPE

(1) ORDERING CODE 產品名稱

<b>Y11</b>	<b>P</b>	<b>6.9</b>	<b>x</b>	<b>3.7</b>	<b>P2</b>
Material	Type	Outside Diameter(A φ)		Length(D)	Shape
材質	形狀	外徑(A φ)		長度(D)	形體

(2) SUITABLE MATERIAL(適用材質)

F4D, C5A, C5, C6, E1C, E1D, E2, Y5E, Y8B, Y9, Y9D, Y11

(3) SHAPE(圖形標示)

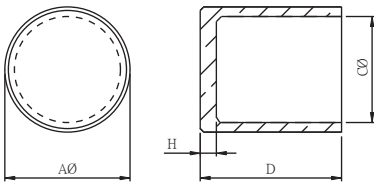
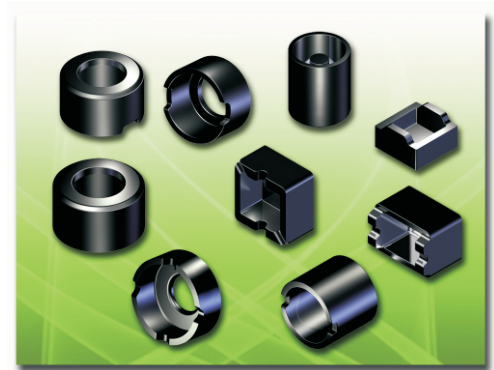


Fig1

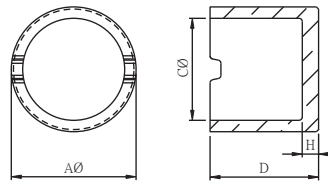


Fig2

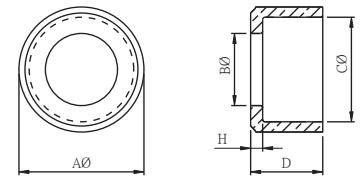


Fig3

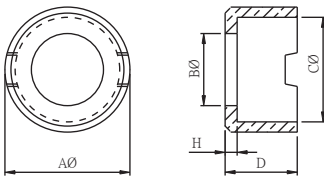


Fig4

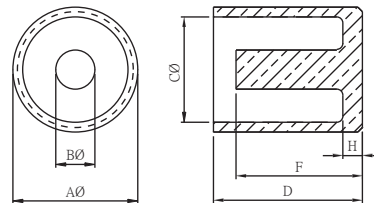


Fig5

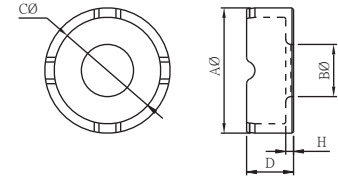


Fig6

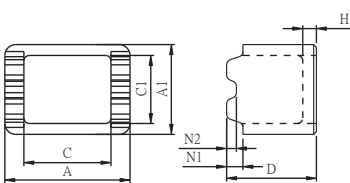


Fig7

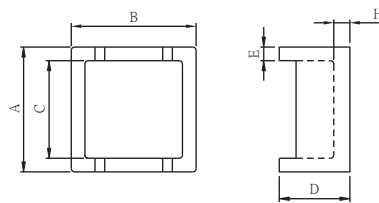


Fig8

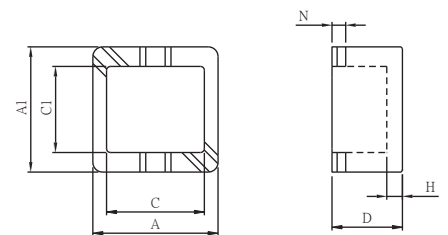


Fig9

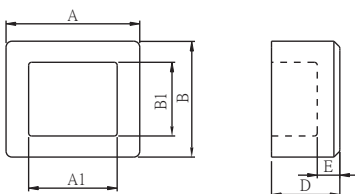


Fig10

(4)DIMENSIONS(尺寸)

Unit:mm

NO.	CORE	Fig	A φ	B φ	C φ	D	H	F	COMBINED WITH
1	P 4.35x2.2 P2	3	4.35±0.03	2.70±0.15	3.60±0.15	2.20±0.20	0.50±0.10		
2	P 5.2x3.3 P2	3	5.20±0.03	3.00±0.15	4.50±0.15	3.30±0.20	0.70±0.10		
3	P 5.2x3.3 P2	3	5.20±0.03	3.30±0.15	4.35±0.15	3.30±0.20	0.70±0.10		
4	P 5.26x3 P2	3	5.26±0.03	3.20±0.15	4.15±0.15	3.00±0.20	0.70±0.10		
5	P 5.5x4.8 P2	3	5.50±0.20	3.40±0.15	4.40±0.15	4.80±0.20	0.70±0.10		
6	P 5.5x4.8 P2	3	5.50±0.20	3.70±0.15	4.40±0.15	4.80±0.20	0.70±0.10		
7	P 5.9x2.7 P2	3	5.90±0.03	4.60±0.15	5.00±0.15	2.70±0.20	1.10±0.15		
8	P 6.9x3.7 P2	3	6.90±0.03	4.10±0.15	5.60±0.15	3.70±0.20	0.50±0.10		
9	P 6.9x6 P2	3	6.90±0.03	4.10±0.15	5.60±0.15	6.00±0.20	1.30±0.15		
10	P 7x4.3 P2	3	7.00±0.03	4.15±0.15	5.75±0.15	4.30±0.20	1.00±0.15		
11	P 9.85x6.6 P2	3	9.85±0.03	4.50±0.15	8.20±0.15	6.60±0.20	1.40±0.15		
12	P 9.85x6.6 P2	3	9.85±0.03	4.50±0.15	8.50±0.15	6.60±0.20	1.40±0.15		
13	P 3.71x2.1	8	3.71±0.10		2.90±0.10	2.10±0.10	0.40±0.10(P-260)		I 2.45x1.8x2(T)
14	P 2.45x1.95x1.15	10	2.45±0.10		1.95±0.10	1.15±0.10	0.38±0.10(P-215)		I 1.52x1x1(T)
15	P 4.4x2.1	2	4.40±0.15		3.50±0.15	2.10±0.15	0.35±0.10		DR 3.3x2.1
16	P 4.6x.2.1	1	4.60±0.15		3.40±0.15	2.10±0.15	0.50±0.10		
17	P 3.2x2.5x1.8	9	3.20±0.15		2.50±0.15	1.80±0.15	0.40±0.10(P-303)		
18	P 3.2x2.2x2.2	7	3.20±0.15		2.20±0.15	2.20±0.15	0.40±0.10(P-332)		
19	P 4.6x3.2x3.3	7	4.60±0.15		3.20±0.15	3.30±0.15	0.50±0.10(P-321)		
20	P 5.4x2.4	2	5.40±0.15		4.40±0.15	2.40±0.15	0.35±0.10		DR 4.3x2.2
21	P 5.4x2.4	2	5.40±0.15		4.60±0.15	2.40±0.15	0.35±0.10		DR 4.3x2.2
22	P 6x2	3	6.00±0.15		5.20±0.15	2.20±0.10	0.35±0.10		DR 6x2.2(S) D3
23	P 6x6.7	1	6.00±0.20		4.80±0.15	6.70±0.20	0.80±0.10		DR2W 4.5x5(S)
24	P 7x8.3	1	7.00±0.20		5.50±0.15	8.30±0.20	1.10±0.15		DR2W 5x7(S)
25	P 7x7.7	1	7.00±0.20		5.80±0.15	7.70±0.20	1.10±0.15		DR2W 5/5.5x6(S)
26	P 7.80x9.25	2	7.80±0.20		6.20±0.15	9.25±0.30	1.00±0.15		DR2W 4.5x8.2(S)
27	P 8.3x9.9 P16	5	8.30±0.20	2.60±0.10	6.60±0.15	9.90±0.20	1.30±0.15	8.40±0.20	
28	P 9.1x12	1	9.10±0.20		6.70±0.15	12.0±0.40	1.50±0.15		DR2W 6x8(S)
29	P 9.1x9	1	9.10±0.20		7.15±0.15	9.00±0.30	1.20±0.15		DR2W 6x6(S)
30	P 9.1x10.5	1	9.10±0.20		7.40±0.15	10.5±0.30	1.20±0.15		DR2W 6x6(S)
31	P 9.1x9.4 P16	5	9.10±0.20	3.00±0.10	7.00±0.15	9.40±0.20	1.40±0.15		
32	P 9.5x8.5 P16	5	9.50±0.20	3.00±0.10	7.00±0.15	8.50±0.20	1.30±0.15	6.80±0.15	
33	P 9.5x9.6 P16	5	9.50±0.20	3.40±0.20	7.80±0.15	9.60±0.30	1.40±0.15	8.00±0.20	



# P TYPE

DIMENSIONS(尺寸)

Unit:mm

NO.	CORE	Fig	A $\phi$	B $\phi$	C $\phi$	D	H	F	COMBINED WITH
34	P 9.75x9.9	1	9.75±0.20		7.50±0.15	9.90±0.30	1.00±0.15		DR2W 7.1x7(S)
35	P 9.8x11.2	1	9.80±0.20		7.80±0.15	11.2±0.30	1.30±0.15		DR 6.5x7.5(S)
36	P 10x6.8 P2	3	10.0±0.20	4.50±0.15	8.50±0.15	6.80±0.20	1.20±0.15		DR 7.6x5.4
37	P 10x9.2	1	10.0±0.20		8.40±0.15	9.20±0.30	1.20±0.15		DR2W 7.8x7.3(S)
38	P 10.2x12	2	10.2±0.20		8.25±0.15	12.0±0.30	1.30±0.15		DR2W 7.8x7.6(S)
39	P 10.5x3.3	3	10.5±0.20	1.80±0.15	8.30±0.15	3.30±0.15	0.90±0.15		DR 7.8x3
40	P 10.5x11.5	1	10.5±0.20		8.50±0.15	11.5±0.30	1.50±0.15		DR2W 7.8x10(S)
41	P 10.5x9.2	1	10.5±0.20		8.65±0.15	9.20±0.30	12.0±0.15		DR2W 7.8x7.3(S)
42	P 10.5x12.7	1	10.5±0.20		8.90±0.15	12.7±0.30	2.50±0.15		DR2W 7.8x10(S)
43	P 11.5x10.5	2	11.5±0.20		9.40±0.15	10.5±0.30	1.30±0.15		DR2W 7.8x7.6(S) RCH
44	P 11.5x13.8	1	11.5±0.20		8.50±0.15	13.8±0.30	2.00±0.15		DR2W 7.8x7.6(S) RCH
45	P 12x4.5	9	12.0±0.25	5.00±0.15	10.2±0.15	4.50±0.15	0.70±0.15(P-315)		
46	P 12.4x14	1	12.4±0.20		10.5±0.15	14.0±0.30	1.60±0.15		DR2W 9x10/12/9.6x11(S)
47	P 12.4x9.8	1	12.4±0.20		10.0±0.15	9.80±0.20	1.60±0.15		DR 9.4x7.6(S)
48	P 12.7x14	1	12.7±0.30		11.0±0.15	14.0±0.30	1.50±0.15		DR2W 9x12(S)
49	P 12.4x12.8	1	12.4±0.20		10.0±0.15	12.8±0.30	1.30±0.15		DR2W 9x8(S)
50	P 12.4x12.8	1	12.4±0.20		10.5±0.15	12.8±0.30	1.30±0.15		DR2W 9x8(S)
51	P 13.2x15	1	13.2±0.20		10.5±0.15	15.0±0.30	1.50±0.15		DR 8x12(S)
52	P 13.2x15	1	13.2±0.20		10.0±0.15	15.0±0.30	1.60±0.15		DR2W 8x11(S)
53	P 14.8x15.8	2	14.8±0.30	2.00±0.15	12.45±0.15	15.8±0.30	1.80±0.15		DR 11.05x12.2(S)
54	P 15.6x18.8	4	15.6±0.30	4.20±0.15	12.8±0.15	18.8±0.30	2.00±0.15		DR2W 11.3x15(S)
55	P 15.6x18.8	1	15.6±0.30		13.5±0.15	18.8±0.30	2.00±0.15		DR2W 12x15(S)
56	P 16x16	2	16.0±0.30		14.0±0.20	16.0±0.30	1.50±0.15		DR2W 12.5x13.5(S)
57	P 18.5x18.8	1	18.5±0.30		16.4±0.20	18.8±0.30	2.00±0.15		DR 15x16(S)
58	P 15x12.6	1	15.0±0.30		12.0±0.20	12.6±0.30	1.50±0.15		DR2W 10x12(S)
59	P 12.4X14	2	12.4±0.20		10.55±0.15	14.0±0.30	1.60±0.15		DR2W 9x12(S)