

## DR2W TYPE

(1) ORDERING CODE 產品名稱

C5A	DR2W	16	x	18	(S	H)
Material	Type	Outside Diameter(AΦ)		Length(D)	Slot	Hole
材質	形狀	外徑(AΦ)		長度(D)	出線槽	穿孔

(2) SUITABLE MATERIAL (適用材質)

F4D, C5A, F4F, F5D, F6D.....

(3) SHAPE (圖形標示)

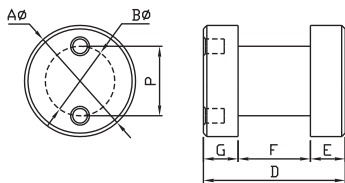


Fig 1

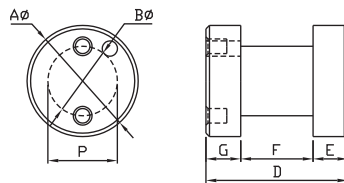


Fig 2

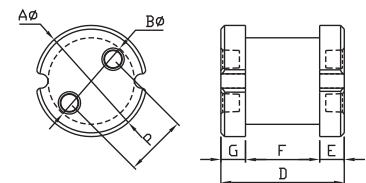


Fig 3

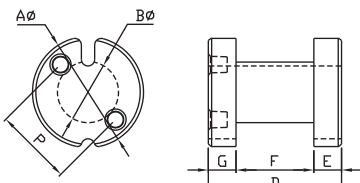


Fig 4

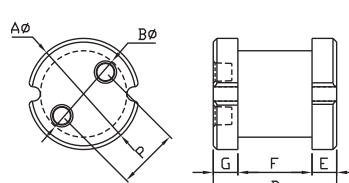


Fig 5

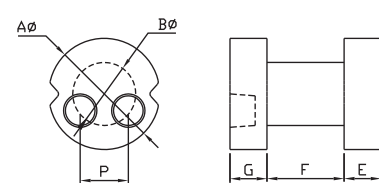


Fig 6

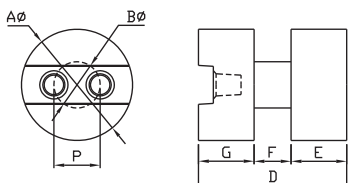


Fig 7

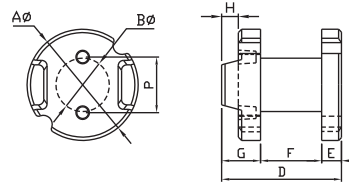


Fig 8

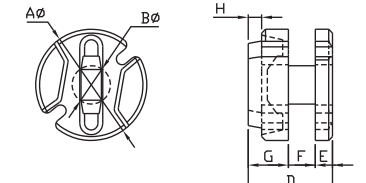


Fig 9

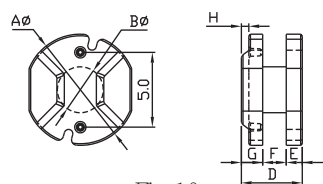


Fig 10

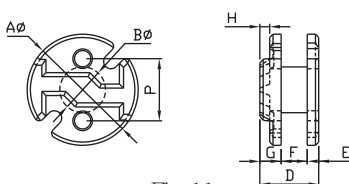


Fig 11

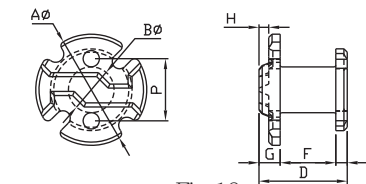


Fig 12

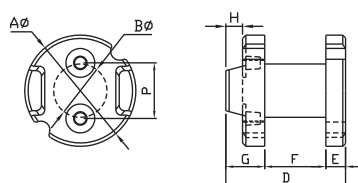


Fig 13

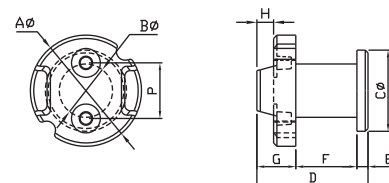


Fig 14

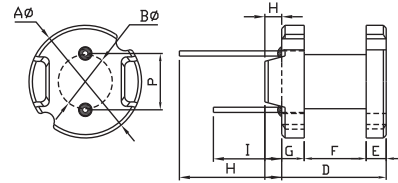


Fig 15

## (4) DIMENSIONS(尺寸)

Unit:mm

NO.	CORE	Fig	Aφ	Bφ	Cφ	D	E	F	G	H	P
1	DR2W 3x4	1	3.00±0.10	1.50±0.10		4.00±0.15	1.25±0.15	1.50±0.15			1.45
2	DR2W 3x9.8(S)	2	3.00±0.10	1.70±0.10		9.80±0.30	1.40±0.15	7.00±0.15			1.30
3	DR2W 4x5.5	1	4.00±0.20	2.00±0.15		5.50±0.20	1.60±0.15	2.30±0.15			1.75/2
4	DR2W 4x5.5(S)	5	4.00±0.20	2.00±0.15		5.50±0.20	1.60±0.15	2.30±0.15			1.5/1.75/2.0
5	DR2W 4.2x6(S)	5	4.20±0.20	2.00±0.15		6.00±0.20	1.50±0.15	3.00±0.15			2.00
6	DR2W 4.5x3.3(S) D41M	10	4.50±0.20	1.80±0.15		3.30±0.20	0.50±0.10	1.50±0.15	1.30±0.15	0.5	2.50
7	DR2W 4.45x5.5(S)	5	4.45±0.20	2.25±0.15		5.50±0.20	1.55±0.15	2.40±0.15			2/2.5
8	DR2W 4.5x7(S) RCH	8	4.50±0.20	2.20±0.15		7.00±0.20	1.00±0.10	3.70±0.15	2.30±0.15	0.8	2.50
9	DR2W 4.6x7(S) RCH	8	4.60±0.20	2.30±0.15		7.00±0.20	0.80±0.10	4.00±0.15	2.20±0.15	0.8	2.50
10	DR2W 5x7(S)	5	5.00±0.20	2.00±0.15		7.00±0.20	2.00±0.15	3.00±0.15			2/2.5/3.0
11	DR2W 5x7	1	5.00±0.20	2.00±0.15		7.00±0.20	2.00±0.15	3.00±0.15			2.50
12	D2W2 5x7 (S)	3	5.00±0.20	2.00±0.15		7.00±0.20	2.00±0.15	3.00±0.15			2.50
13	DR2W 5x5.5(S) RCH	8	5.00±0.20	2.00±0.15		5.50±0.20	0.90±0.10	2.00±0.15	2.60±0.15	1.4	3.00
14	DR2W 5.5x5(S)	5	5.50±0.20	2.40±0.15		5.00±0.20	1.35±0.15	2.30±0.15			2/2.5
15	DR2W 5.8x6.3(S) RCH	8	5.80±0.20	2.40±0.15		6.30±0.20	0.80±0.10	3.30±0.15	2.20±0.15	0.8	3/4.0
16	DR2W 5.8x6(S) RCH	9	5.80±0.20	2.20±0.15		6.00±0.30	0.90±0.10	2.90±0.15	2.20±0.15	0.8	
17	DR2W 6.2x6.3(S) RCHD3	14	6.20±0.20	2.50±0.15	3.70±0.15	6.30±0.20	0.60±0.10	3.10±0.15	2.60±0.15	1.0	4.00
18	DR2W 6x8 RCH	7	6.00±0.20	2.50±0.15		8.00±0.30	3.00±0.15	2.00±0.15			2.50
19	DR2W 6x8.3	1	6.00±0.20	2.50±0.15		8.30±0.30	2.15±0.15	4.00±0.15			2.6/3.0/3.5/4
20	DR2W 6x8.3(S)	5	6.00±0.20	2.50±0.15		8.30±0.30	2.15±0.15	4.00±0.15			2.5/3/3.5/3.7
21	DR2W 6.2x4.8(S)RCH	8	6.20±0.20	2.00±0.15		4.80±0.20	0.95±0.10	1.60±0.15	2.25±0.15	0.6	4.00
22	DR2W 6.4x7.8(S) RCH	8	6.40±0.20	3.20±0.15		7.80±0.30	1.30±0.15	4.00±0.15	2.50±0.15	1.0	2.50
23	DR2W 6.5x7.5	1	6.50±0.20	3.00±0.15		7.50±0.20	1.75±0.15	4.00±0.15			3/3.5
24	DR2W 6.8x3.6(S) RCH	11	6.80±0.20	2.80±0.15		3.60±0.20	0.70±0.10	1.60±0.15	1.30±0.15	0.6	3.8
25	DR2W 6.8x5.4(4S) RCH	12	6.80±0.20	3.10±0.15		5.40±0.20	0.70±0.10	3.40±0.15	1.30±0.15	0.6	3.8
26	DR2W 6.8x9.5(S) RCH	8	6.80±0.20	3.00±0.15		9.50±0.30	1.50±0.15	5.00±0.15	3.00±0.15	1.0	2.6
27	DR2W 7x8	1	7.00±0.20	3.00±0.15		8.00±0.30	2.00±0.15	4.00±0.15			4/4.5/5.0
28	DR2W 7.1x8.2(S)	5	7.10±0.20	2.70±0.15		8.20±0.30	2.10±0.15	4.00±0.15			4.5/5
29	DR2W 7.5x8(S)	5	7.50±0.20	3.00±0.15		8.00±0.30	2.00±0.15	4.00±0.15			3/5/5.5

## DIMENSIONS(尺寸)

Unit:mm

NO.	CORE	Fig	Aφ	Bφ	Cφ	D	E	F	G	H	P
30	DR2W 7.5x10(S) RCH	8	7.50±0.20	3.50±0.15		10.0±0.30	1.10±0.15	6.00±0.15	2.90±0.15	1.0	5.00
31	DR2W 7.5x6.95(4S) RCH	8	7.50±0.20	3.20±0.15		6.95±0.20	1.30±0.15	3.00±0.15	2.65±0.15	1.2	5.00
32	DR2W 7.8x6.4(S)	5	7.80±0.20	3.20±0.15		6.40±0.20	1.35±0.15	3.70±0.15			5.00
33	DR2W 7.8x7(S) RCHD3	14	7.80±0.20	3.50±0.15	5.50±0.15	7.00±0.20	1.00±0.10	3.20±0.15	2.80±0.15	1.0	5.00
34	DR2W 7.8x9.3 (S) RCH	8	7.80±0.20	4.00±0.15		9.30±0.30	1.30±0.15	5.00±0.15	3.00±0.15	1.0	5.00
35	DR2W 7.8x4.7(S) D41M	10	7.80±0.20	3.60±0.15		4.70±0.20	0.80±0.10	2.20±0.15	1.70±0.15		5.00
36	DR2W 8x10(S)	5	8.00±0.20	3.50±0.15		10.0±0.30	2.25±0.15	5.50±0.15			4/5.0
37	DR2W 8x10	1	8.00±0.20	3.50±0.15		10.0±0.30	2.25±0.15	5.50±0.15			4/4.5/5.0
38	DR2W 8x10(H)	2	8.00±0.20	3.50±0.15		10.0±0.30	2.25±0.15	5.50±0.15			4/4.5/5.0
39	DR2W 8x10(S) RCH	8	8.00±0.20	3.50±0.15		10.0±0.30	1.50±0.15	5.00±0.15	3.50±0.15	1/1.5	5.00
40	DR2W 8x25(S)	5	8.00±0.20	5.00±0.15		25.0±0.50	3.50±0.15	18.0±0.20			5.00
41	DR2W 9x12(S)	5	9.00±0.30	4.00±0.15		12.0±0.30	2.50±0.15	7.00±0.15			5/5.5/6.0
42	DR2W 9x12	1	9.00±0.30	4.00±0.15		12.0±0.30	2.50±0.15	7.00±0.15			5/5.5/6.0
43	DR2W 9x12(H)	2	9.00±0.30	4.00±0.15		12.0±0.30	2.50±0.15	7.00±0.15			5/6.0
44	DR2W 9x12(S)RCH	8	9.00±0.30	4.00±0.15		12.0±0.30	1.30±0.15	7.00±0.15	3.70±0.15	1.5	5.00
45	DR2W 9.1x11(S)	5	9.10±0.30	4.50±0.15		11.0±0.30	1.70±0.15	7.60±0.15			5.00
46	DR2W 9.4x14.5(4S)RCH	8	9.40±0.30	5.00±0.15		14.5±0.30	3.50±0.15	7.50±0.15	3.50±0.15	1.2	5.00
47	DR2W 9.6x11(S)	5	9.60±0.30	4.80±0.15		11.0±0.30	1.75±0.15	7.50±0.15			7.00
48	DR2W 9.6x14(S)RCH	8	9.60±0.30	5.70±0.15		14.0±0.30	1.50±0.15	9.50±0.15	3.50±0.15		5.00
49	DR2W 10x10(S)RCHD3	14	10.0±0.30	4.80±0.15	7.30±0.15	10.0±0.30	1.00±0.15	5.50±0.15	3.50±0.15	1.5	5/6.4
50	DR2W 10x12	1	10.0±0.30	4.00±0.15		12.0±0.30	2.50±0.15	7.00±0.15			5/6/6.5/7/7.5
51	DR2W 10x12(H)	2	10.0±0.30	4.00±0.15		12.0±0.30	2.50±0.15	7.00±0.15			5/5.5/6/6.5/7.0
52	DR2W 10x12(S)	5	10.0±0.30	4.00±0.15		12.0±0.30	2.50±0.15	7.00±0.15			5/6/7.0
53	DR2W 10x12(S)	4	10.0±0.30	5.65±0.15		12.0±0.30	2.40±0.15	7.20±0.15			5/7.0/5.5
54	DR2W 10x14(S)RCH	4	10.0±0.30	5.00±0.15		14.0±0.30	1.50±0.15	9.00±0.15	3.50±0.15	1.5	5/6/6.50
55	D2W2 10x14(S)	3	10.0±0.30	5.00±0.15		14.0±0.30	2.50±0.15	9.00±0.15			5/7.0
56	DR2W 10x12(S) RCH	13	10.0±0.30	5.50±0.15		12.0±0.30	1.50±0.15	7.00±0.15	3.50±0.15	1/1.5	5/6/6.5
57	DR2W 10.4x5.7(S) D41M	6	10.4±0.15	4.30±0.15		5.70±0.20	1.50±0.15	2.20±0.15	2.00±0.15		7.00
58	DR2W 11x10(S)	5	11.0±0.30	4.50±0.15		10.0±0.30	2.60±0.15	6.50±0.15			5/6/7/7.5

## DIMENSIONS(尺寸)

Unit:mm

NO.	CORE	Fig	Aφ	Bφ	Cφ	D	E	F	G	H	P
59	DR2W 11x10	1	11.0±0.30	4.50±0.15		10.0±0.30	2.60±0.15	6.50±0.15			6.5/7.5
60	DR2W 11x13.5(S)RCHD3	14	11.0±0.30	5.50±0.15	7.30±0.15	13.5±0.30	1.50±0.15	9.00±0.15	3.50±0.15	1.5	5.00
61	DR2W 11x13.5(S) RCH	8	11.0±0.30	6.00±0.15		13.5±0.30	1.50±0.15	8.00±0.15	4.00±0.15	1.5	5.00
62	DR2W 11.3x15(S)	5	11.3±0.30	8.50±0.15		15.0±0.30	2.25±0.15	10.5±0.15			7.50
63	DR2W 11.5x15(S) RCH	8	11.5±0.30	6.00±0.15		15.0±0.30	3.00±0.15	8.00±0.15	4.00±0.15	2.0	7.50
64	DR2W 12x10(S)RCHD3	14	12.0±0.30	5.00±0.15	8.90±0.15	10.0±0.30	1.20±0.15	5.00±0.15	3.80±0.15	1.7	9.00
65	DR2W 12x13(S)	5	12.0±0.30	6.00±0.15		13.0±0.30	2.00±0.15	9.00±0.15			5/6/7/7.5/8.0
66	DR2W 12x15	1	12.0±0.30	6.00±0.15		15.0±0.30	2.50±0.15	10.0±0.15			5/6/7.5
67	DR2W 12x16(H)	2	12.0±0.30	6.00±0.15		16.0±0.30	3.00±0.15	10.0±0.15			7.50
68	DR2W 12x14(S) RCH	8	12.0±0.30	6.30±0.15		14.0±0.30	1.70±0.15	8.30±0.15	4.00±0.15	2.0	7.50/7.7
69	DR2W 12.5x13.5(S)	5	12.5±0.30	6.50±0.15		13.5±0.30	3.00±0.15	7.50±0.15			7.50
70	DR2W 13x15	1	13.0±0.30	6.50±0.15		15.0±0.30	3.00±0.15	9.00±0.15			7.50
71	DR2W 13x11.5(S)	5	13.0±0.30	4.80±0.15		11.5±0.30	2.40±0.15	6.70±0.15			9.90
72	DR2W 13x16.5(S)RCH	8	13.0±0.30	6.80±0.15		16.5±0.30	2.35±0.15	10.3±0.15	3.85±0.15	1.5	7.50
73	DR2W 14x15	1	14.0±0.30	7.00±0.15		15.0±0.30	3.00±0.15	9.00±0.15			7.5/8/10.0/9.0
74	DR2W 14x15(S)	5	14.0±0.30	7.00±0.15		15.0±0.30	3.00±0.15	9.00±0.15			7.5/8/10
75	DR2W 14x15(H)	2	14.0±0.30	7.00±0.15		15.0±0.30	3.00±0.15	9.00±0.15			7.5
76	DR2W 15x15(S)	5	15.0±0.30	8.00±0.15		15.0±0.30	3.00±0.15	9.00±0.15			7.5/9.5
77	DR2W 15x18	1	15.0±0.30	8.00±0.15		18.0±0.30	2.50±0.15	13.0±0.15			10.0
78	DR2W 15x18(S)	5	15.0±0.30	8.00±0.15		18.0±0.30	2.50±0.15	13.0±0.15			7.5/9.5
79	DR2W 16x16(S)D3 C13	14	16.0±0.30	10.5±0.15	13.0±0.15	16.0±0.30	1.50±0.15	12.0±0.15	2.50±0.15		7.5
80	DR2W 16x18	1	16.0±0.30	10.0±0.15		18.0±0.30	2.50±0.15	13.0±0.15			7.5/9/9.5/10
81	DR2W 16x18(H)	2	16.0±0.30	10.0±0.15		18.0±0.30	2.50±0.15	13.0±0.15			9/9.5/10
82	DR2W 16x18(S)	5	16.0±0.30	10.0±0.15		18.0±0.30	2.50±0.15	13.0±0.15			7/7.5/9/9.5/10
83	DR2W 16x18(SH)	2	16.0±0.30	10.0±0.15		18.0±0.30	2.50±0.15	13.0±0.15			7.5/9.5/10
84	DR2W 18x18	1	18.0±0.30	10.0±0.15		18.0±0.30	2.50±0.15	13.0±0.15			7.5/9.5/10/12.5/13
85	DR2W 18x18(S)	5	18.0±0.30	10.0±0.15		18.0±0.30	2.50±0.15	13.0±0.15			12.5
86	DR2W 18x22(H)	2	18.0±0.30	10.0±0.15		22.0±0.40	4.00±0.15	14.0±0.15			9.5/10
87	DR2W 20x20(S)	5	20.0±0.30	11.0±0.15		20.0±0.40	3.00±0.15	14.0±0.15			15.0